

VORTAC BFM <b>116.35</b> Chan <b>110(Y)</b>	APP CRS <b>162°</b>	Rwy Idg TDZE <b>26</b> Apt Elev <b>26</b>	<b>7800</b>
---------------------------------------------------	------------------------	-------------------------------------------------	-------------

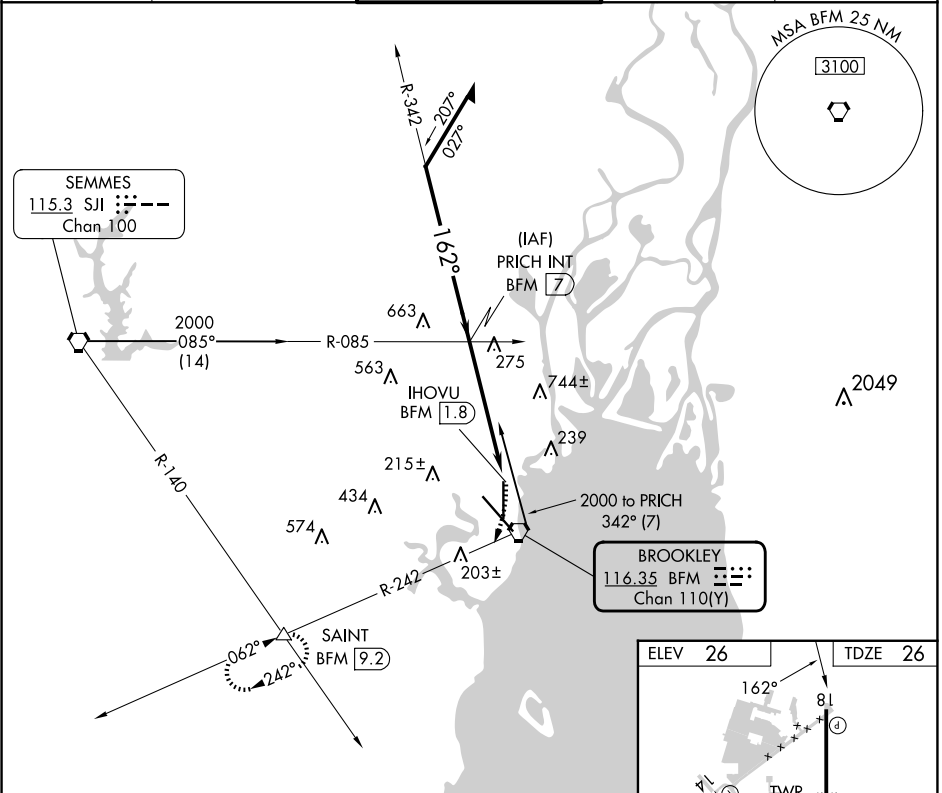
# VOR RWY 18

MOBILE INTL (BFM)

**⚠** Helicopter visibility reduction below 3/4 SM NA. When local altimeter setting not received; use Mobile Rgnl altimeter setting and increase all MDA 60 feet and increase S-18 Cat C visibility 1/8 mile and Circling Cat C visibility 1/4 SM. VDP NA with Mobile Rgnl altimeter setting.

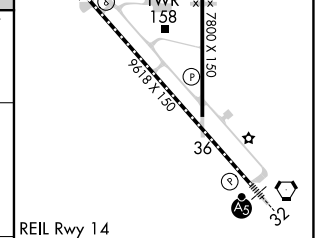
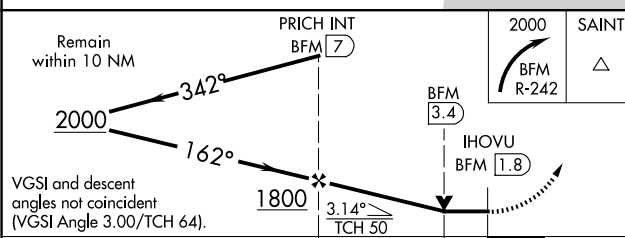
MISSED APPROACH: Climbing right turn to 2000 on BFM VORTAC R-242 to SAINT INT/BFM 9.2 DME and hold.

ATIS <b>135.575</b>	MOBILE APP CON * <b>118.5 269.3</b>	INTERNATIONAL TOWER * <b>118.8 (CTAF) 0 251.1</b>	GND CON <b>121.7 239.3</b>	UNICOM <b>122.95</b>
------------------------	----------------------------------------	------------------------------------------------------	-------------------------------	-------------------------



SE-4, 17 APR 2025 to 15 MAY 2025

SE-4, 17 APR 2025 to 15 MAY 2025



CATEGORY	A	B	C	D
S-18	580-1	554 (600-1)	580-1 1/8 554 (600-1 1/8)	580-1 1/4 554 (600-1 1/4)
<b>C</b> CIRCLING	680-1	654 (700-1)	680-1 1/4 654 (700-1 1/4)	1100-3 1074 (1100-3)

REIL Rwy 14	HIRL Rwy 14-32	MIRL Rwy 18-36	TDZ/CL Rwy 32		
FAF to MAP 5.2 NM					
Knots	60	90	120	150	180
Min:Sec	5:12	3:28	2:36	2:05	1:44