

WAAS CH <b>70510</b> <b>W22A</b>	APP CRS <b>222°</b>	Rwy Idg TDZE <b>78</b> Apt Elev <b>79</b>
--	------------------------	---

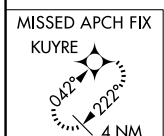
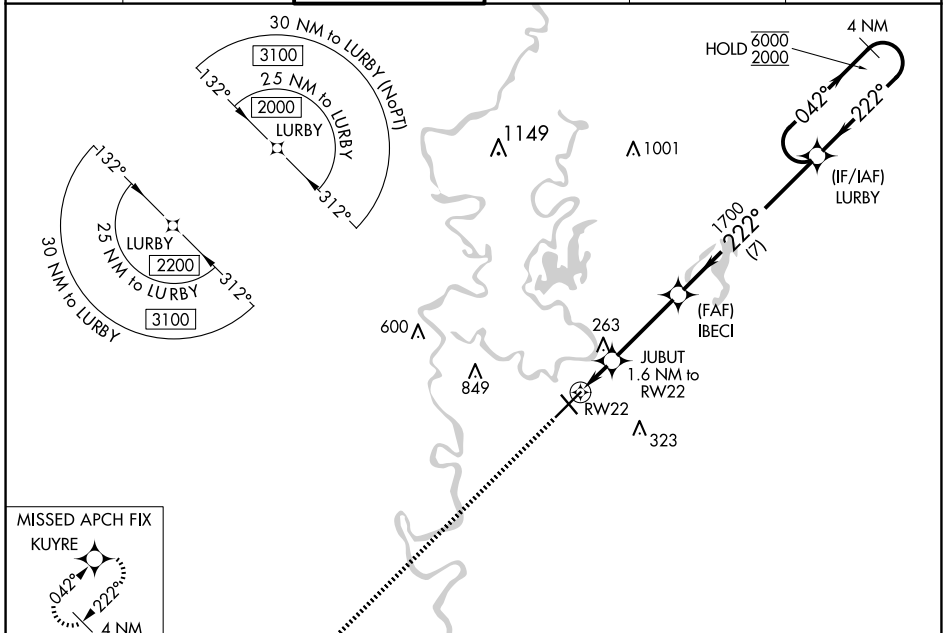
# RNAV (GPS) RWY 22

MONROE RGNL (MLU)

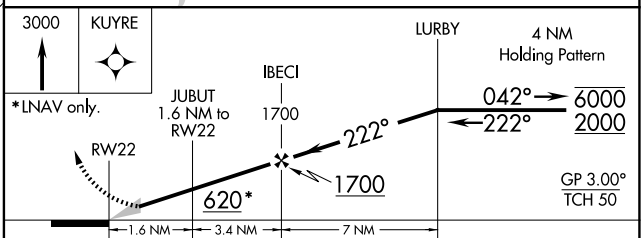
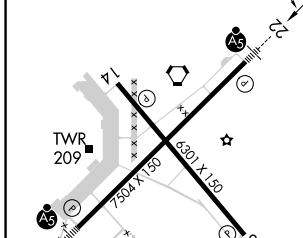
RNP APCH.  
 Circling Rwy 14 NA at night. For uncompensated Baro-VNAV systems, LNAV/VNAV NA below -6°C or above 54°C. For inop ALS, increase LNAV/VNAV all Cats visibility to 1½ SM.  
 ASR

MALSR  
  
 MISSED APPROACH: Climb to 3000 direct KUYRE and hold, continue climb-in-hold to 3000.

ATIS <b>125.05</b>	MONROE APP CON * <b>118.15 290.475</b>	MONROE TOWER * <b>118.9 (CTAF) 257.8</b>	GND CON <b>121.9</b>	CLNC DEL <b>121.65</b>	UNICOM <b>122.95</b>
-----------------------	---	---	-------------------------	---------------------------	-------------------------



ELEV 79	<b>D</b>	TDZE 78
---------	----------	---------



CATEGORY	A	B	C	D
LPV DA		278-½	200 (200-½)	
LNAV/VNAV DA		534-1	456 (500-1)	
LNAV MDA	520-½	442 (500-½)	520-¾	442 (500-¾)
<b>C</b> CIRCLING	540-1 461 (500-1)	580-1 501 (600-1)	740-1¾ 661 (700-1¾)	1160-3 1081 (1100-3)

REIL Rwy 14 and 32  
 MIRL Rwy 14-32   
 HIRL Rwy 4-22

SC-4, 17 APR 2025 to 15 MAY 2025

SC-4, 17 APR 2025 to 15 MAY 2025