


HI-ILS Y or LOC Y RWY 10

LOC I-MGM 109.9	APCH CRS 097°	Rwy Idg 9020 TDZE 219 Arpt Elev 232
---------------------------	-------------------------	--

[USAF] MONTGOMERY RGNL (DANNELLY FLD) (KMGM)

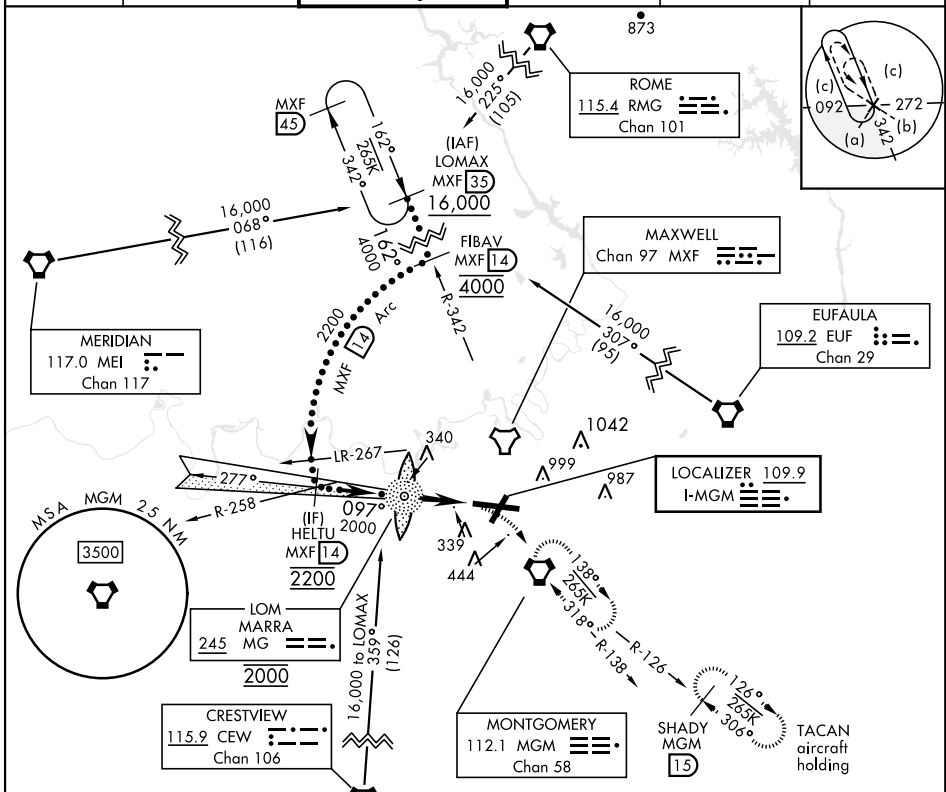
DME required. ADF and DME required for LOC only.

- When ALS inop, increase RVR to 40 vis to 3/4 miles.
- When ALS inop, increase vis to 1 1/2 miles.
- *** Circling not authorized for CAT E, N of Rwy 10-28.

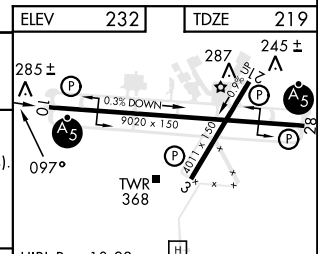
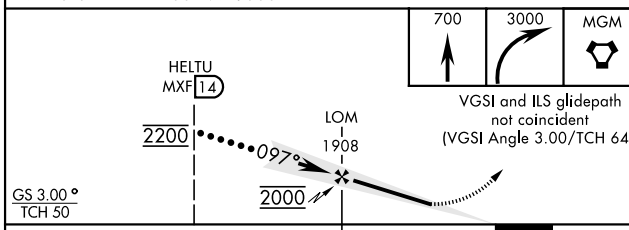
MALSRS 

MISSED APPROACH: Climb to 700 then climbing right turn to 3000 direct MGM VORTAC and hold, continue climb in hold to 3000.
TACAN aircraft continue to 3500 on MGM R-126 to SHADY/MGM 15 DME and hold southeast, right turn, 306° inbound.

ATIS 120.675	APP CON ★ 124.0 363.025	DANNELLY TOWER ★ 119.7(CTAF) 0360.85	GND CON 121.7 348.6	CINC DEL 118.3 270.3	UNICOM 112.95
------------------------	-----------------------------------	--	-------------------------------	--------------------------------	-------------------------



EMERG SAFE ALT 100 NM 5000



CATEGORY	C	D	E	FAF to MAP 5.2 NM					
	419/24	200	(200-1/2)	Knots	120	140	160	180	200
S-ILS 10 *				Min:Sec	2:36	2:14	1:57	1:44	1:34
S-LOC 10 **									
*** CIRCLING	800-1 1/2 568 (600-1 1/2)	860-2 628 (700-2)	860-2 1/4 628 (700-2 1/4)						

HI-ILS Y or LOC Y RWY 10

SE-4, 17 APR 2025 to 15 MAY 2025

SE-4, 17 APR 2025 to 15 MAY 2025