

MONTGOMERY, ALABAMA

HI-TACAN-J

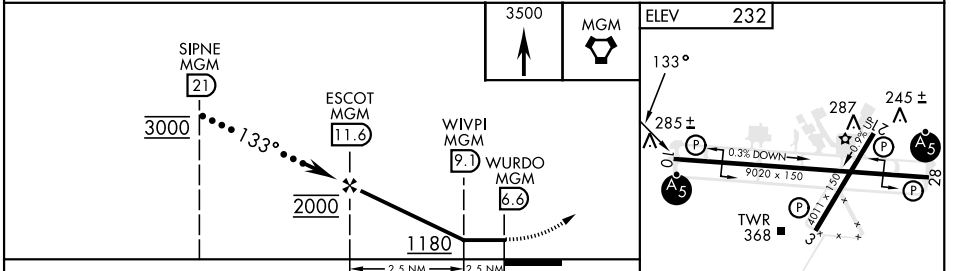
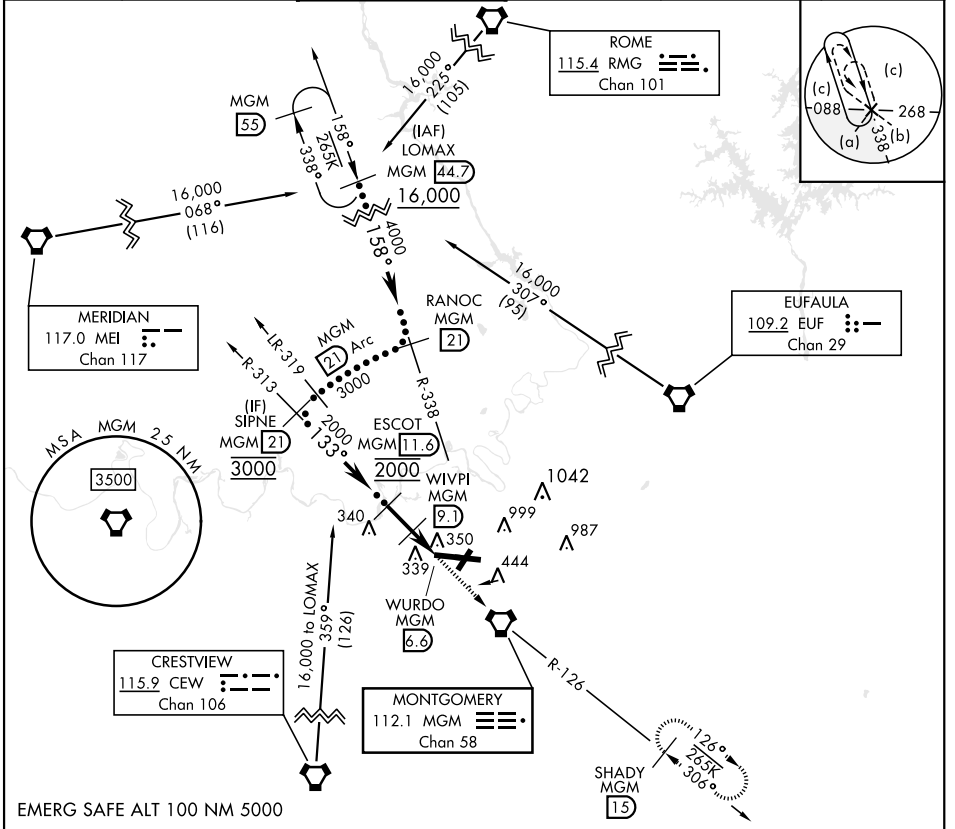
VORTAC MGM 112.1 Chan 58	APCH CRS 133°	Rwy Idg THRE Arprt Elev N/A N/A 232
--	-------------------------	---

[USAF] MONTGOMERY RGNL (DANNELLY FLD) (KMGM)

▼ *Circling not authorized for CAT E north of Rwy 10-28.

MISSED APPROACH: Climb to 3500 direct MGM VORTAC and on MGM R-126 to SHADY/MGM 15 DME and hold.

ATIS 120.675	APP CON ★ 124.0 363.025	DANNELLY TOWER ★ 119.7(CTAF) 360.85	GND CON 121.7 348.6	CLNC DEL 118.3 270.3	UNICOM 112.95
------------------------	-----------------------------------	---	-------------------------------	--------------------------------	-------------------------



CATEGORY	C	D	E
CIRCLING*	800-1½ 568 (600-1½)	860-2 628 (700-2)	860-2¼ 628 (700-2¼)

MONTGOMERY, ALABAMA 32°18'N-86°24'W MONTGOMERY RGNL (DANNELLY FLD) (KMGM)

HI-TACAN-J

SE-4, 17 APR 2025 to 15 MAY 2025

SE-4, 17 APR 2025 to 15 MAY 2025