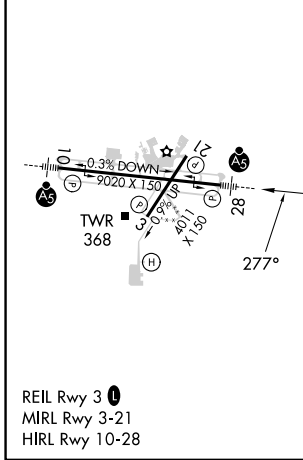
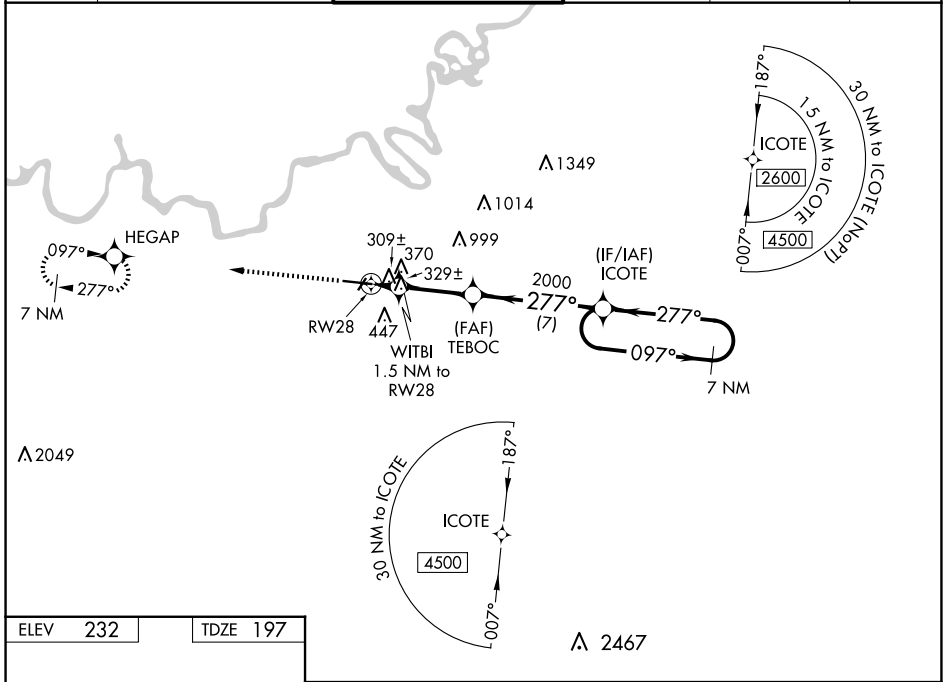


WAAS CH 56200 W28A	APP CRS 277°	Rwy Idg 9020 TDZE 197 Apt Elev 232
--	------------------------	---

RNAV (GPS) RWY 28

MONTGOMERY RGNL (DANNELLY FLD) (MGM)

RNP APCH-GPS.			MALSR		MISSED APPROACH: Climb to 3100 direct HEGAP and hold.	
<p>▼ For uncompensated Baro-VNAV systems, LNAV/VNAV NA below -8°C or above 54°C. For inop MALSR, increase LPV ▲ Cat E visibility to ¾ mile; increase LNAV/VNAV Cat E visibility to 1½ mile; increase LNAV Cat E visibility to 1½ mile. Circling for Cat E NA north of Rwy 10-28.</p>						
ATIS 120.675	MONTGOMERY APP CON * 124.0 363.025	DANNELLY TOWER * 119.7 (CTAF) 0 360.85	GND CON 121.7 348.6	CLNC DEL 118.3 270.3	UNICOM 122.95	



3100	HEGAP	VGSI and RNAV glidepath not coincident (VGSI Angle 3.00/TCH 75).		7 NM	Holding Pattern
	ICOTE	TEBOC	2000	097°	2600
	WITBI	1.5 NM to RWY 28		277°	
	RWY 28	1 NM to RWY 28			
		720	2000		
		1 NM	0.5	4 NM	7 NM
CATEGORY	A	B	C	D	E
LPV DA	397-½		200 (200-½)		
LNAV/VNAV DA	606-⅞		409 (400-⅞)		
LNAV MDA	580-½ 383 (400-½)		580-⅝ 383 (400-⅝)		
<input checked="" type="checkbox"/> CIRCLING	700-1 468 (500-1)		800-1½ 568 (600-1½)		860-2 628 (700-2)
			860-2¼ 628 (700-2¼)		

SE-4, 17 APR 2025 to 15 MAY 2025

SE-4, 17 APR 2025 to 15 MAY 2025