

WAAS CH 56435 W18A	APP CRS 184°	Rwy Idg 4000
		TDZE 547
		Apt Elev 551

RNAV (GPS) RWY 18

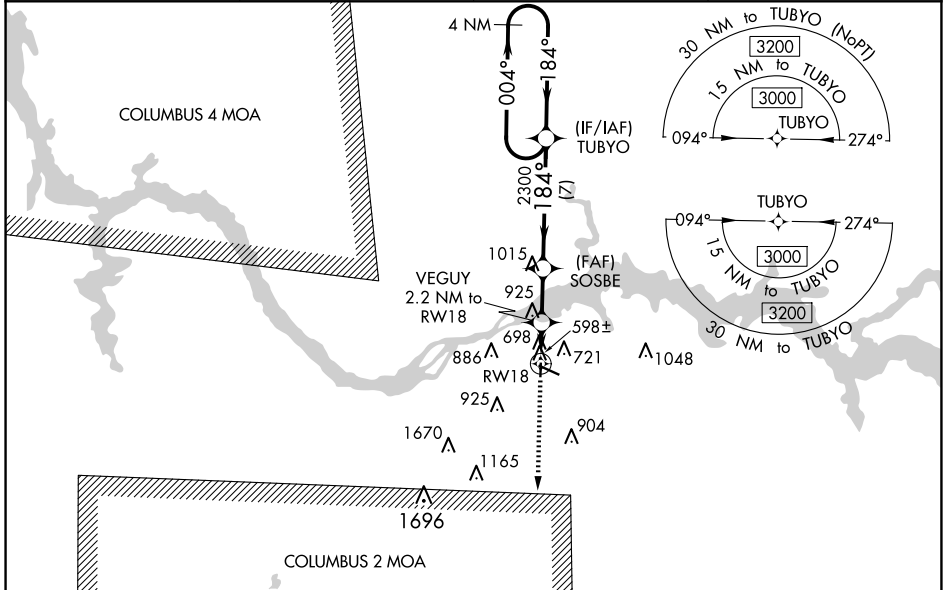
NORTHWEST ALABAMA RGNL (MSL)

RNP APCH.

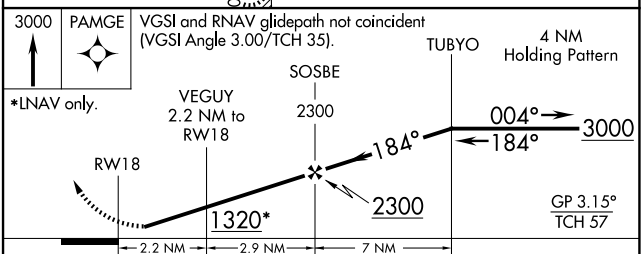
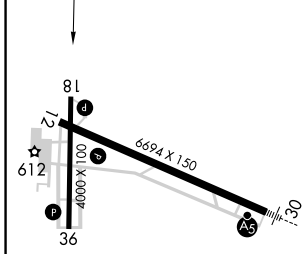
Baro-VNAV NA when using Decatur altimeter setting. For uncompensated Baro-VNAV systems, LNAV/VNAV NA below -4°C (25°F) or above 54°C (130°F). Rwy 18 helicopter visibility reduction below ¼ SM NA. When local altimeter setting not received, use Decatur altimeter setting and increase LPV DA to 880, LNAV/VNAV DA to 1065 and all MDA 100 feet, increase LNAV Cat C visibility ¼ SM, increase Circling Cat C visibility ½ SM.

MISSED APPROACH: Climb to 3000 direct PAMGE and hold.

ASOS 119.425	MEMPHIS CENTER 120.8 307.0	GCO 121.725	UNICOM 123.05 (CTAF)
------------------------	--------------------------------------	-----------------------	--------------------------------



ELEV	551	TDZE	547
------	-----	------	-----



CATEGORY	A	B	C	D
LPV DA	797-1 250 (300-1)			NA
LNAV/VNAV DA	982-1 435 (500-1 1/8)			NA
LNAV MDA	960-1	413 (500-1)	960-1 1/4 413 (500-1 1/4)	NA
C CIRCLING	1040-1	489 (500-1)	1280-2 729 (800-2)	NA

SE-4, 17 APR 2025 to 15 MAY 2025

SE-4, 17 APR 2025 to 15 MAY 2025