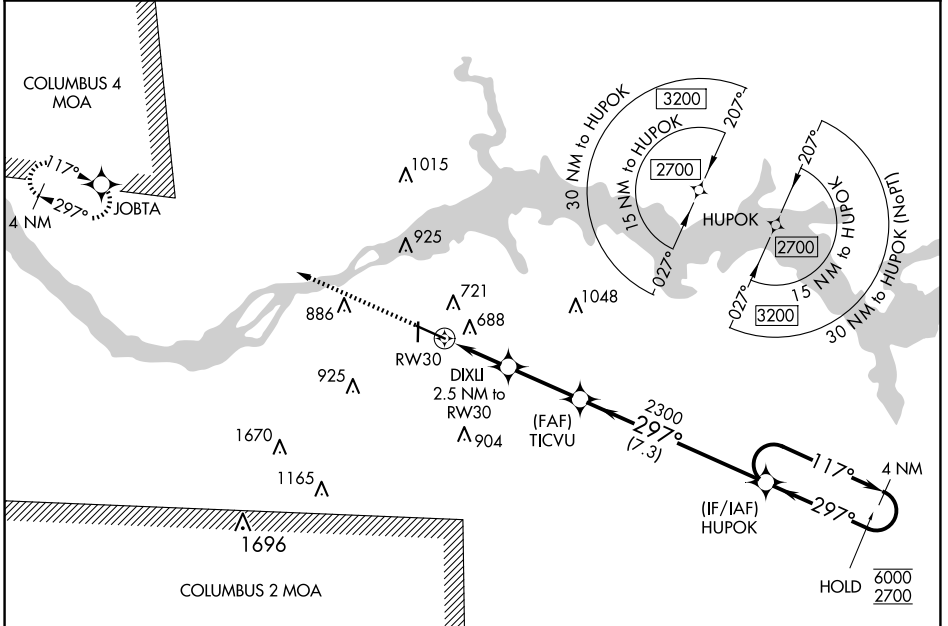


WAAS CH 40000 W30A	APP CRS 297°	Rwy Idg TDZE Apt Elev	6694 551 551
--	------------------------	-----------------------------	---

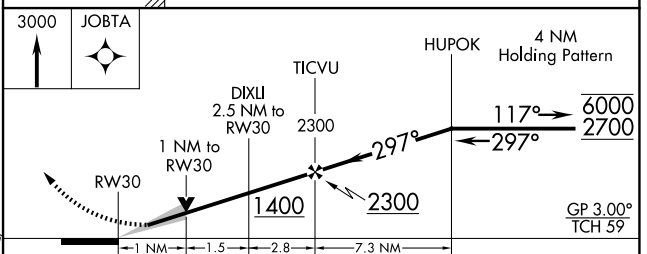
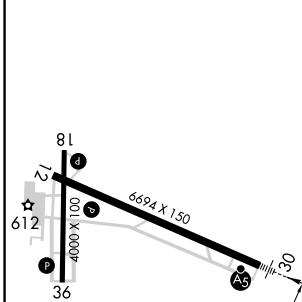
RNAV (GPS) RWY 30

NORTHWEST ALABAMA RGNL (MISL)

RNP APCH - GPS.		MALSR	MISSED APPROACH: Climb to 3000 direct JOBTA and hold.
For uncompensated Baro-VNAV systems, LNAV/VNAV NA below -9°C or above 54°C.			
ASOS 119.425	MEMPHIS CENTER 120.8 307.0	GCO 121.725	UNICOM 123.05 (CTAF)



ELEV 551	TDZE 551
----------	----------



CATEGORY	A	B	C	D
LPV DA		751-1/2	200 (200-1/2)	
LNAV/VNAV DA		962-3/4	411 (500-3/4)	
LNAV MDA	940-1/2	389 (400-1/2)	940-5/8	389 (400-5/8)
CIRCLING	1040-1	489 (500-1)	1280-2	1280-2 1/4
			729 (800-2)	729 (800-2 1/4)

- REIL Rwy 12
- MIRL Rwy 18-36
- HIRL Rwy 12-30

SE-4, 17 APR 2025 to 15 MAY 2025

SE-4, 17 APR 2025 to 15 MAY 2025