

LOC/DME I-APC 111.3 Chan 50	APP CRS 006°	Rwy Idg TDZE Apt Elev	5930 17 36
--	------------------------	-----------------------------	---------------------------------------

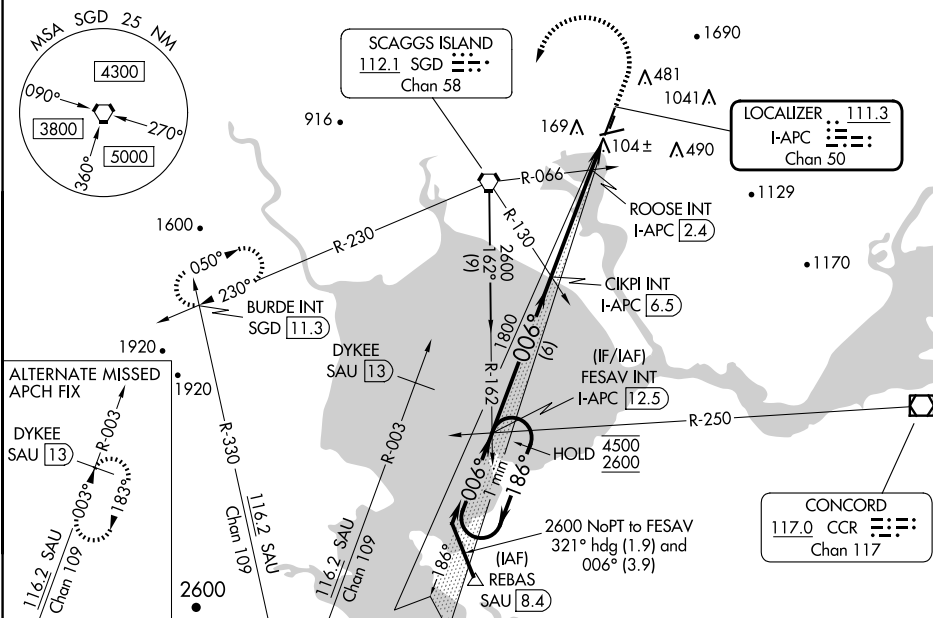
ILS or LOC Z RWY 1L

NAPA COUNTY (APC)

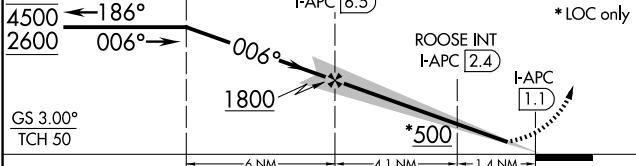
⚠ Autopilot coupled approach NA below 530. Inop table does not apply to S-ILS 1L. Circling Cats A/B/C NA northeast of Rwy 19R and 24. Circling Cat D NA east of Rwy 19L-1R. Circling Rwy 6 NA at night.

MALS MISSED APPROACH: Climb to 500 then climbing left turn to 3200 direct SGD VORTAC and on SGD VORTAC R-230 to BURDE INT/SGD 11.3 DME and hold, continue climb-in-hold to 3200.

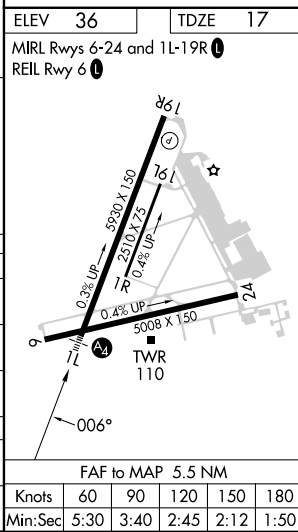
ATIS 124.05	OAKLAND CENTER 127.8 353.5	NAPA TOWER * 118.7 (CTAF) 257.8	GND CON 121.7	CLNC DEL 127.85	UNICOM 122.95
-----------------------	--------------------------------------	---	-------------------------	---------------------------	-------------------------



One Minute Holding Pattern	FESAV INT I-APC 12.5	500	3200	SGD	SGD R-230	BURDE INT
----------------------------	----------------------	-----	------	-----	-----------	-----------



CATEGORY	A	B	C	D
S-ILS 1L	217-3/4		200 (200-3/4)	
S-LOC 1L	500-3/4		483 (500-3/4)	
CIRCLING	600-1	680-1	1280-3	1300-3
	564 (600-1)	644 (700-1)	1244 (1300-3)	1264 (1300-3)
ROOSE FIX MINIMUMS (DUAL VOR RECEIVERS OR DME REQUIRED)				
S-LOC 1L	360-3/4		343 (400-3/4)	
CIRCLING	600-1	680-1	1280-3	1300-3
	564 (600-1)	644 (700-1)	1244 (1300-3)	1264 (1300-3)



SW-2, 17 APR 2025 to 15 MAY 2025

SW-2, 17 APR 2025 to 15 MAY 2025