

APP CRS	Rwy ldg	5930
166°	TDZE	30
	Apt Elev	36

RNAV (GPS) RWY 19R

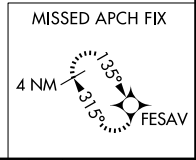
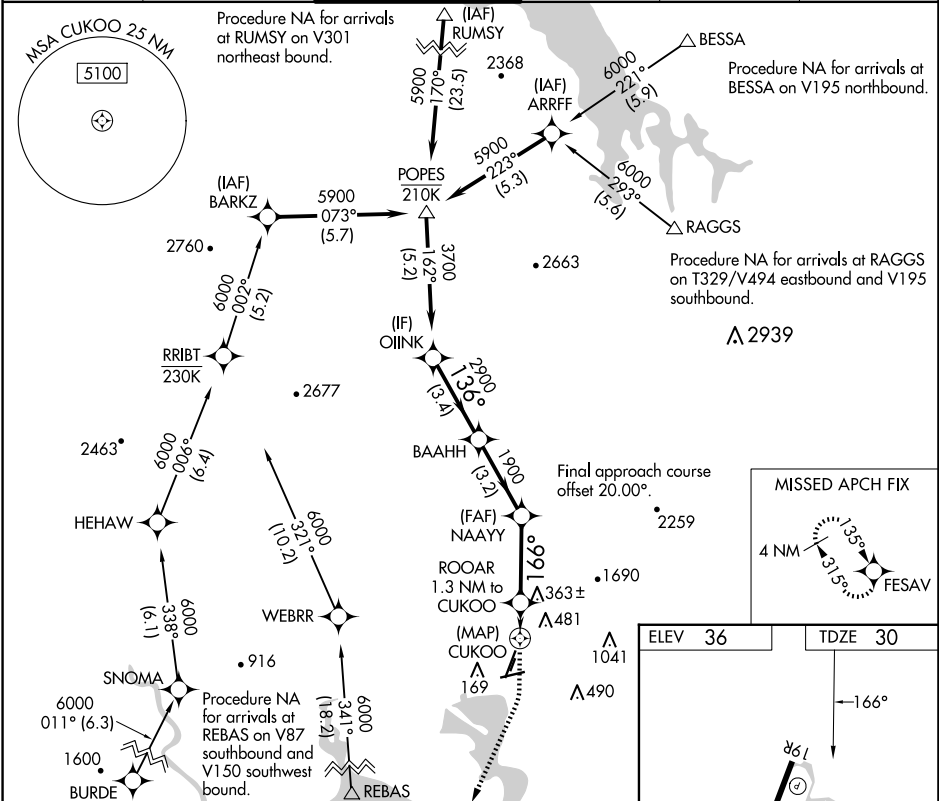
NAPA COUNTY (APC)

RNP APCH - GPS.

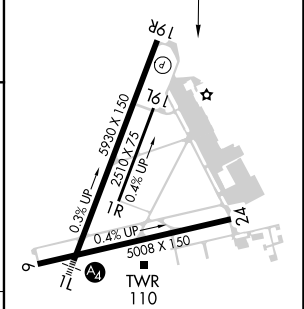
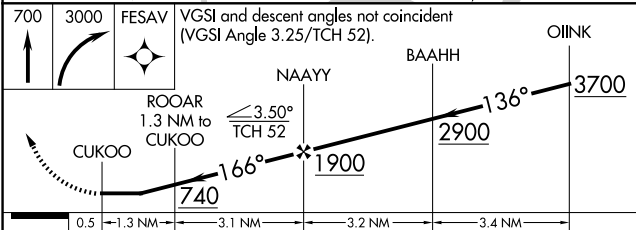
▼ Rwy 19R helicopter visibility reduction below 3/4 SM NA.
▲ Circling Cats A/B/C NA east of Rwy 19R and northwest of Rwy 24. Circling Cat D NA east of Rwy 19L-1R.

MISSED APPROACH: Climb to 700 then climbing right turn to 3000 direct FESAV and hold.

ATIS 124.05	OAKLAND CENTER 127.8 353.5	NAPA TOWER ★ 118.7 (CTAF) 0 257.8	GND CON 121.7	CLNC DEL 127.85	UNICOM 122.95
-----------------------	--------------------------------------	---	-------------------------	---------------------------	-------------------------



ELEV 36	TDZE 30
---------	---------



CATEGORY	A	B	C	D
LNNAV MDA	680-1 650 (700-1)		680-1 650 (700-1)	
CIRCLING	680-1 644 (700-1)		1280-3 1244 (1300-3)	1300-3 1264 (1300-3)

REIL Rwy 6
MIRL Rwy 6-24 and 1L-19R

SW-2, 17 APR 2025 to 15 MAY 2025

SW-2, 17 APR 2025 to 15 MAY 2025