

VORTAC	SGD	APP CRS	Rwy Idg	5008
112.1		050°	TDZE	21
Chan 58			Apt Elev	36

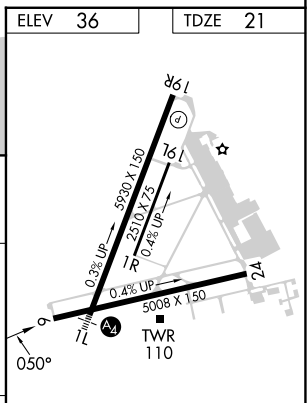
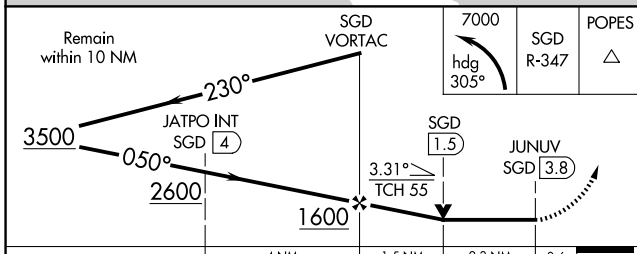
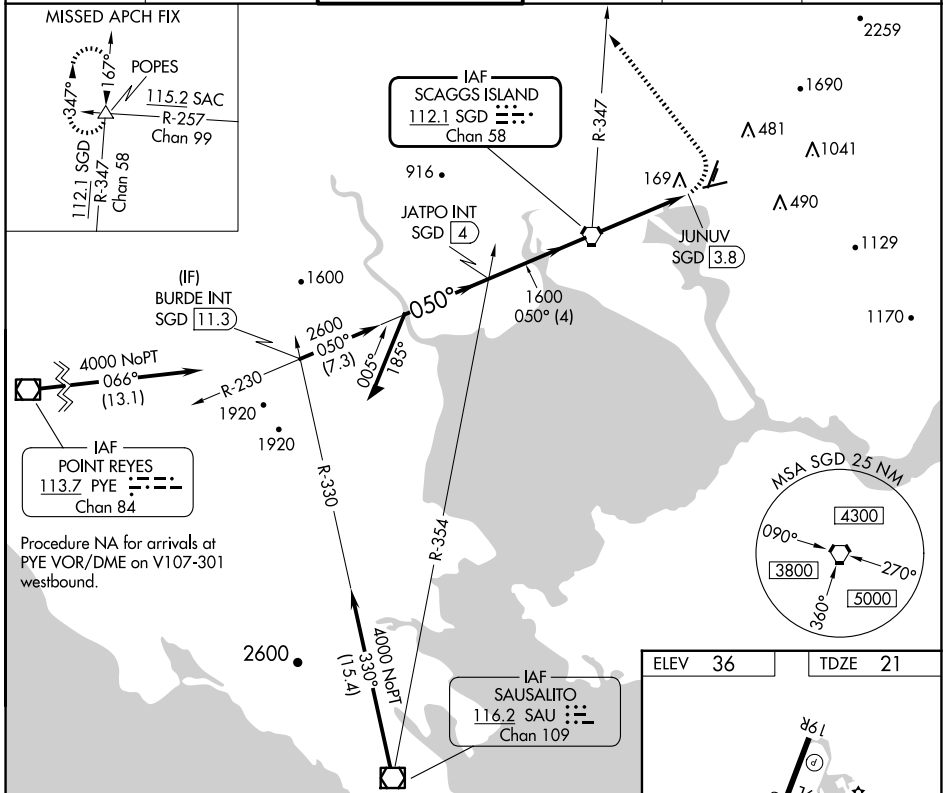
VOR RWY 6

NAPA COUNTY (APC)

⚠ Rwy 6 helicopter visibility reduction below ¼ SM NA.
 Circling Cats A/B/C NA east of Rwy 19R and northwest of Rwy 24. Circling Cat D NA east of Rwy 19L-1R.

MISSED APPROACH: Climbing left turn to 7000 on heading 305° and SGD VORTAC R-347 to POPES INT and hold, continue climb-in-hold to 7000.

ATIS 124.05	OAKLAND CENTER 127.8 353.5	NAPA TOWER ★ 118.7 (CTAF) 257.8	GND CON 121.7	CLNC DEL 127.85	UNICOM 122.95
-----------------------	--------------------------------------	--	-------------------------	---------------------------	-------------------------



CATEGORY	A	B	C	D
S-6	1080-1¼ 1059 (1100-1¼)	1080-1½ 1059 (1100-1½)	1080-3	1059 (1100-3)
C CIRCLING	1080-1¼ 1044 (1100-1¼)	1080-1½ 1044 (1100-1½)	1280-3 1244 (1300-3)	1300-3 1264 (1300-3)

REIL Rwy 6 **Ⓢ**

MIRL Rwys 6-24 and 1L-19R **Ⓢ**

FAF to MAP 3.8 NM

Knots	60	90	120	150	180
Min:Sec	3:48	2:32	1:54	1:31	1:16

SW-2, 17 APR 2025 to 15 MAY 2025

SW-2, 17 APR 2025 to 15 MAY 2025