

HI-TACAN Y RWY 10

TACAN NGU Chan 86Y	APCH CRS 097°	Rwy ldg 8071' TDZE 14 Arprt Elev 15
---------------------------	----------------------	----------------------------------------------------------------

[USN]

NORFOLK NS (CHAMBERS FLD) (KNGU)

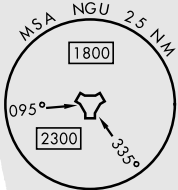
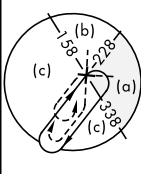
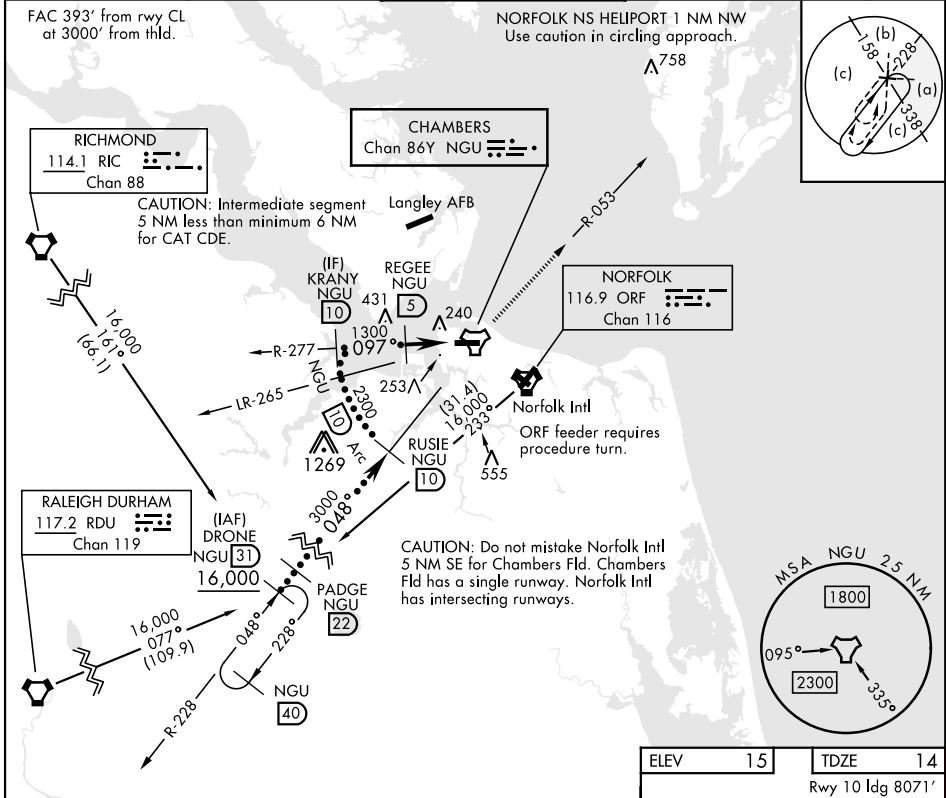
RADAR required

ALSF-2

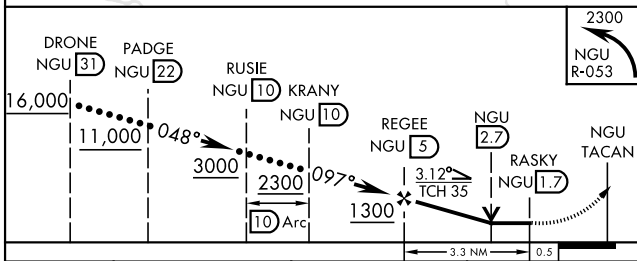
MISSED APPROACH: Climbing left turn to 2300 on NGU TACAN R-053 then as directed by ATC.

▼ * When ALS inop, increase CAT CDE vis to 1¾ miles.
** Circling not authorized S of Rwy 10-28.

ATIS 118.425 338.225	APP CON 118.9 273.475	CHAMBERS TOWER 124.3 379.15	GND CON 121.8 370.85	ASR/PAR
-----------------------------	------------------------------	------------------------------------	-----------------------------	---------



EMERG SAFE ALT 100 NM 4100



ELEV	15	TDZE	14
Rwy 10 ldg 8071' Rwy 28 ldg 7375'			
CATEGORY	C	D	E
S-10*	520-1	506	(600-1)
CIRCLING**	540-1½ 525 (600-1½)	580-2	565 (600-2)
HIRL Rwy 10-28 REIL Rwy 10-28 TDZL/CL Rwy 10-28			

NE-3, 17 APR 2025 to 15 MAY 2025

NE-3, 17 APR 2025 to 15 MAY 2025