

# HI-TACAN Y RWY 28

TACAN NGU Chan <b>86Y</b>	APCH CRS <b>290°</b>	Rwy ldg TDZE Arprt Elev	<b>7375</b> <b>14</b> <b>15</b>
------------------------------	-------------------------	-------------------------------	---------------------------------------

[USN]

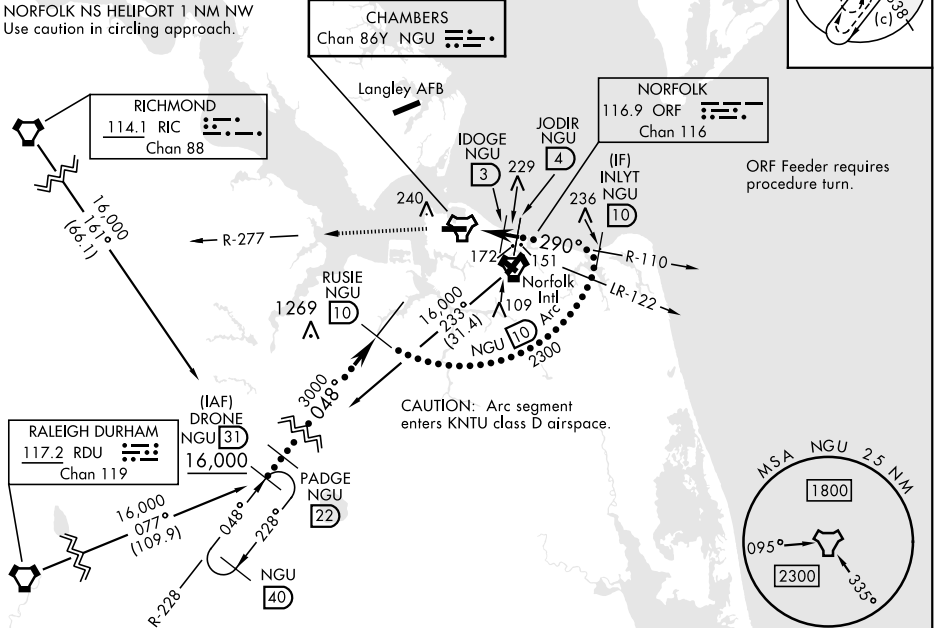
NORFOLK NS (CHAMBERS FLD) (KNGU)

RADAR required * When ALS inop, increase CAT CDE vis to 1 3/8 miles. ** Circling not authorized S of Rwy 10-28.	SSALF 	MISSED APPROACH: Climb to 2300 on NGU TACAN R-277 then as directed by ATC.
---	-----------	---

ATIS <b>118.425 338.225</b>	APP CON <b>118.9 273.475</b>	CHAMBERS TOWER <b>124.3 379.15</b>	GND CON <b>121.8 370.85</b>	ASR/PAR
--------------------------------	---------------------------------	---------------------------------------	--------------------------------	---------

**CAUTION:**  
Do not mistake Norfolk Intl 5 NM SE for Chambers Fld. Chambers Fld has a single rwy, Norfolk Intl has int runways.

NORFOLK NS HELIPOINT 1 NM NW  
Use caution in circling approach.



EMERG SAFE ALT 100 NM 4100

CATEGORY	C	D	E
	460-1	446	(500-1)
S-28 *	540-1 1/2 525 (600-1 1/2)	580-2	565 (600-2)

ELEV	15	TDZE	14
------	----	------	----

Rwy 10 ldg 8071'  
Rwy 28 ldg 7375'

HIRL Rwy 10-28  
REIL Rwy 10-28  
TDZL/CL Rwy 10-28

# HI-TACAN Y RWY 28

NE-3, 17 APR 2025 to 15 MAY 2025

NE-3, 17 APR 2025 to 15 MAY 2025