

# TACAN Z RWY 28

TACAN NGU Chan <b>86Y</b>	APCH CRS <b>290°</b>	Rwy ldg <b>7375</b> TDZE <b>14</b> Arprt Elev <b>15</b>
------------------------------	-------------------------	---

[USN]

NORFOLK NS (CHAMBERS FLD) (KNGU)

**RADAR required**

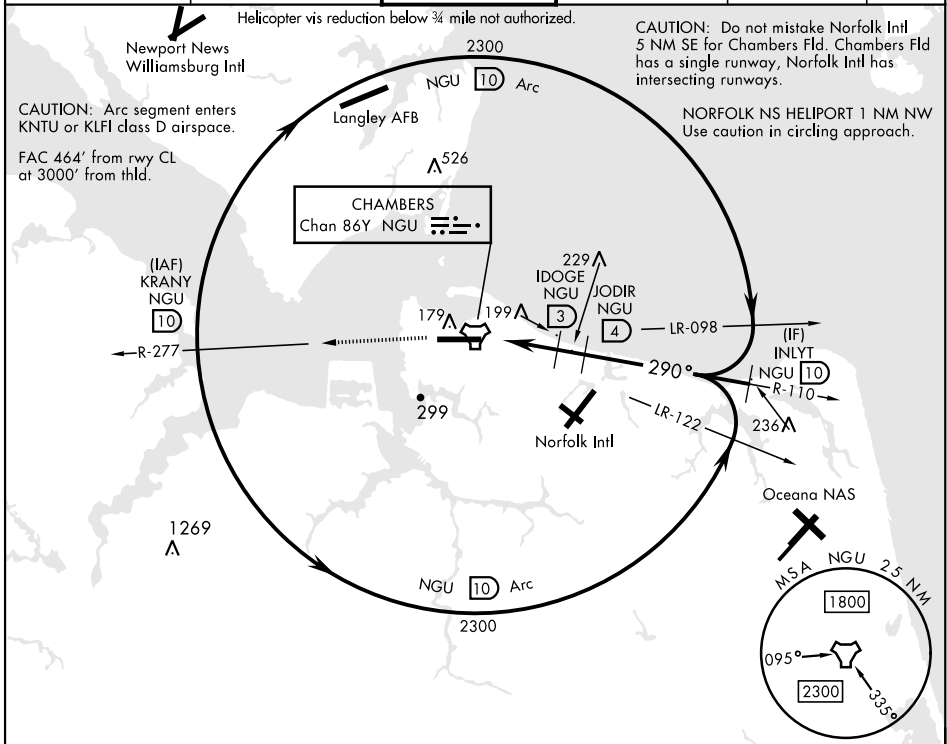
▼ \* When ALS inop, increase CAT AB vis to 1 mile, CAT CD vis to 1 3/8 miles.  
 \*\* Circling not authorized S of Rwy 10-28.

SSALF



MISSED APPROACH: Climb to 2300 on NGU TACAN R-277 then as directed by ATC.

ATIS <b>118.425 338.225</b>	APP CON <b>118.9 273.475</b>	CHAMBERS TOWER <b>124.3 379.15</b>	GND CON <b>121.8 370.85</b>	CLNC DEL <b>120.7 339.8</b>	ASR/PAR
--------------------------------	---------------------------------	---------------------------------------	--------------------------------	--------------------------------	---------



NE-3, 17 APR 2025 to 15 MAY 2025

NE-3, 17 APR 2025 to 15 MAY 2025

**EMERG SAFE ALT 100 NM 4100**

2300 ↑ NGU R-277	NGU TACAN	NGU 1.3	IDOGE NGU 3	JODIR NGU 4	INLYT NGU 10	
	KLUMM NGU 0.5					
			980	1300	2300	
			2.93°			
			TCH 36			
	0.5 NM	2.5 NM	1 NM			
CATEGORY	A		B		C	D
S-28 *	460-3/4		446 (500-3/4)		460-1	446 (500-1)
CIRCLING **	480-1 465 (500-1)		540-1 525 (600-1)		540-1 1/2 525 (600-1 1/2)	580-2 565 (600-2)

ELEV 15	TDZE 14
---------	---------

Rwy 10 ldg 8071'  
Rwy 28 ldg 7375'

NORFOLK NS Heliport

8370 x 208

TWR

A4

# TACAN Z RWY 28