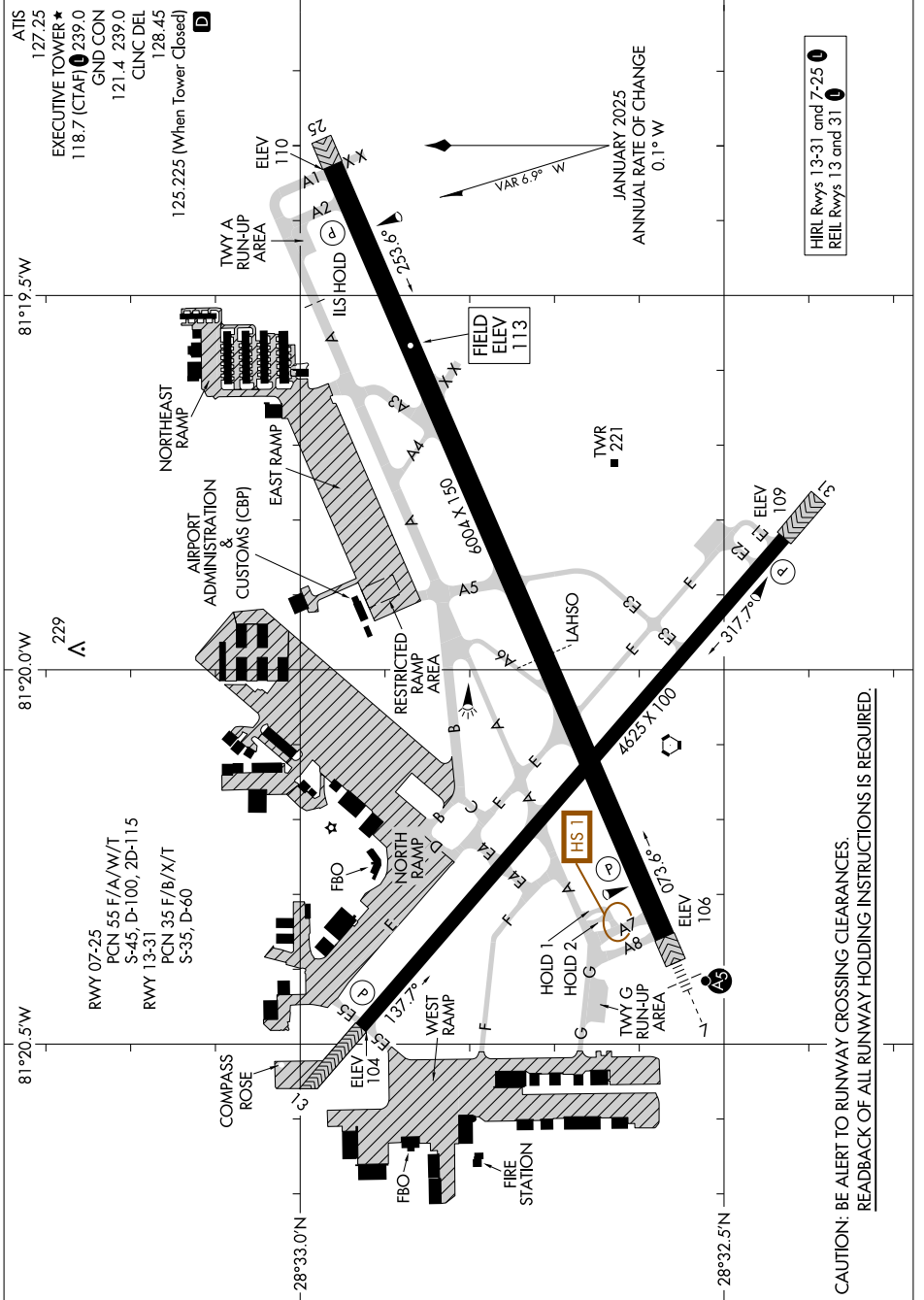


AIRPORT DIAGRAM

AL-305 (FAA)

EXEC (O.R.L.)
ORLANDO, FLORIDA



HIRL Rwy 13-31 and 7-25	1
REL Rwy 13 and 31	1

**CAUTION: BE ALERT TO RUNWAY CROSSING CLEARANCES.
REARBACK OF ALL RUNWAY HOLDING INSTRUCTIONS IS REQUIRED.**

SE-3, 17 APR 2025 to 15 MAY 2025

SE-3, 17 APR 2025 to 15 MAY 2025

AIRPORT DIAGRAM

ORLANDO, FLORIDA
EXEC (O.R.L.)