

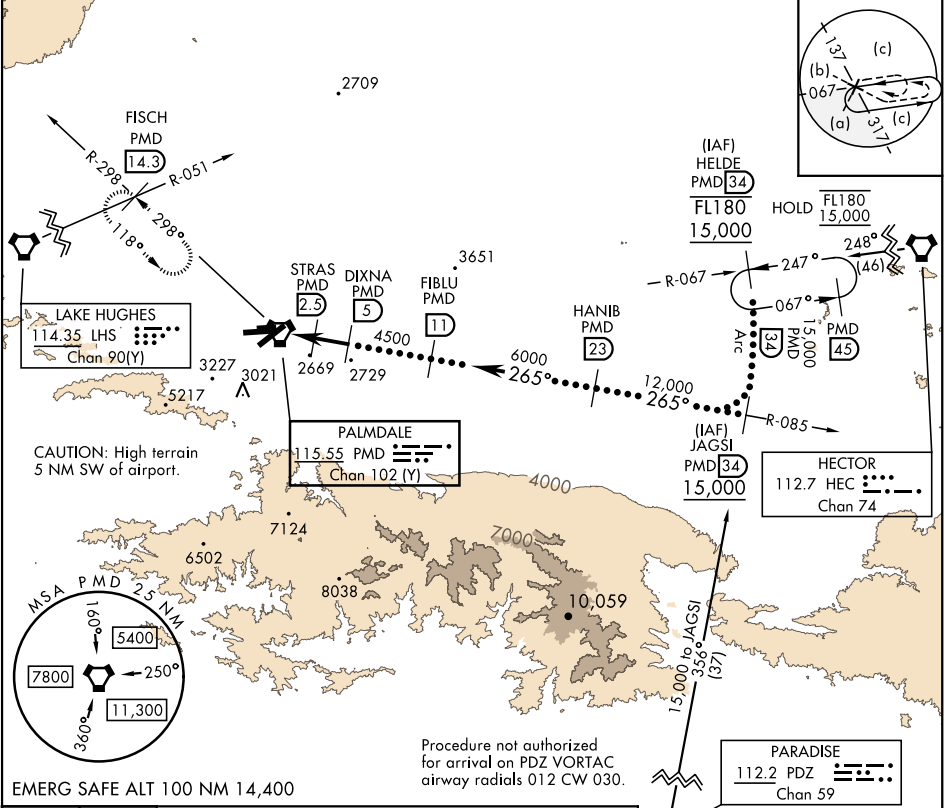
TACAN PMD Chan 102 (Y)	APCH CRS 265°	Rwy Idg 12,002 TDZE 2503 Arprt Elev 2543
----------------------------------	-------------------------	---

AL-310 [USAF]

PALMDALE USAF PLANT 42 (KPMD)

▽ * Circling NA S of Rwy 4 and 25.
▲ MISSED APPROACH: Climb to 3000 then climbing right turn to 6700 on heading 318° on PMD VORTAC R-298 to FISCH INT/PMD 14.3 DME/RADAR and hold, continue climb-in-hold to 6700.

ATIS 118.275	JOSHUA APP CON 124.55 363.0	TOWER★ 123.7 (CTAF) 0 317.6	GND CON 121.9 317.6
------------------------	---------------------------------------	---------------------------------------	-------------------------------



3000	6700	VGS1 and descent angles not coincident.	
↑		Hdg 318°	
VORTAC	STRAS 2.9	DIXNA 5	HANIB 23
EKOTY 0.3	3500	4500	6000
0.8	2.2 NM	2.5 NM	
CATEGORY		C	D
S-25		2840-1	337 (400-1)
CIRCLING*	3140-1½ 597 (600-1½)	3740-3 1197 (1200-3)	3760-3 1217 (1300-3)

ELEV 2543	TDZE 2503
ASSAULT STRIP	
TWR 2626	
HIRL Rwy 4-22, 7-25 0	
REIL Rwy 4, 22, 7, 25 0	

SW-3, 17 APR 2025 to 15 MAY 2025

SW-3, 17 APR 2025 to 15 MAY 2025