

PATUXENT RIVER, MARYLAND

RNAV (GPS) RWY 14

APCH CRS	Rwy Idg	9732
136°	TDZE	27
	Arprt Elev	39

- (USN) PATUXENT RIVER NAS (TRAPNELL FLD) (KNHK)

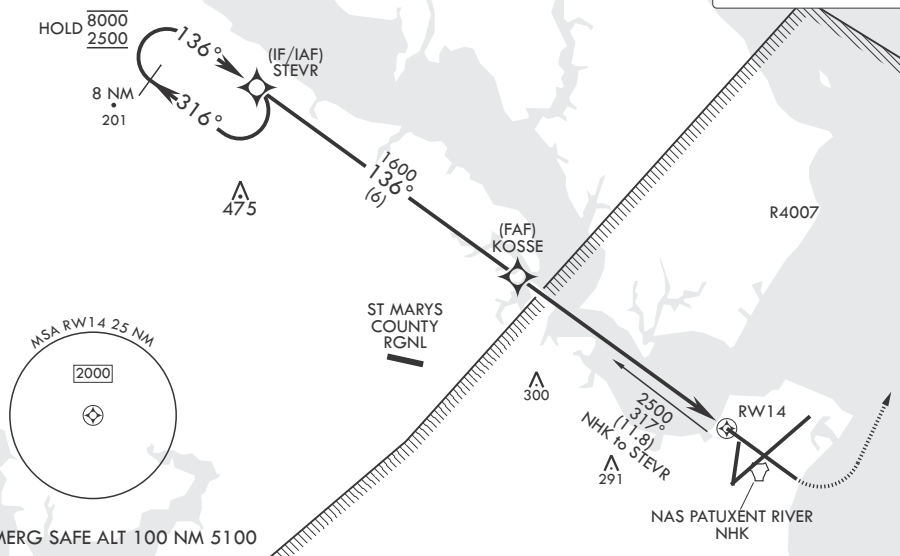
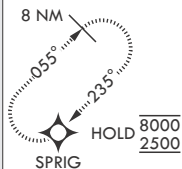
RNP APCH	MISSED APPROACH: Climb to 600, then climbing left turn to 2500 direct SPRIG and hold.
RADAR required	

ATIS	APP CON/DEP CON*	TOWER	GND CON	CLNC DEL	ASR/PAR
322.425	121.0 250.3	123.7 343.65	120.6 336.4	135.2 316.125	

For uncompensated Baro-VNAV systems, Procedure NA, below -15°C (5°F) or above 54°C (129°F).

CAUTION: WCH group 4 aft: 16 feet is less than minimum 20 feet.

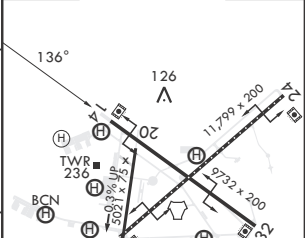
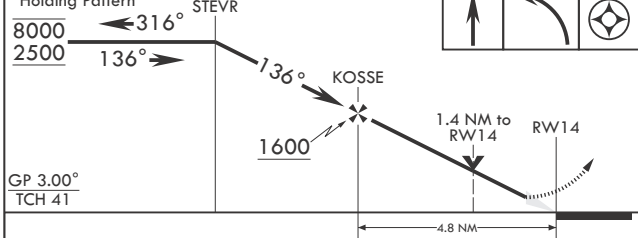
MISSED APPROACH



NE-3, 17 APR 2025 to 15 MAY 2025

NE-3, 17 APR 2025 to 15 MAY 2025

8 NM Holding Pattern	STEVR	ELEV 39	TDZE 27
----------------------	-------	---------	---------



CATEGORY	A	B	C	D	E
LNAV/VNAV DA	367-1 340 (400-1)	378-1 351 (400-1)	386-1 359 (400-1)	397-1	370 (400-1)
LNAV MDA	500-1	473 (500-1)	500-1½	473	(500-1½)
C CIRCLING	540-1 501 (600-1)	560-1 521 (600-1)	620-1½ 581 (600-1½)	680-2 641 (700-2)	820-2¾ 781 (800-2¾)

HIRL Rwy 6-24, 14-32
TDZL/CL Rwy 6

PATUXENT RIVER, MARYLAND

38°17'N - 76°25'W PATUXENT RIVER NAS (TRAPNELL FLD) (KNHK)

Amdt 3 07SEP23

RNAV (GPS) RWY 14