

SWABY NINE DEPARTURE (SWABY9.SWABY)

[USN]

PATUXENT RIVER, MARYLAND

Knots	60	120	180	240	300	360
V/V(fpm)	310	620	930	1240	1550	1860

ATC Climb Rate to 9000

Departure Rwy 2-20 not authorized.  
Minimum filing alt 10,000.

•285  
ATIS 322.425  
CLNC DEL  
135.2 316.125  
GND CON  
120.6 336.4  
TOWER  
123.7 343.65  
APP/DEP CON ★  
121.0 250.3

TACAN required

NAS PATUXENT RIVER  
Chan 39 (Y) NHK

N38° 16.86'  
W76° 24.64'

GORDONSVILLE  
115.6 GVE   
Chan 103

N38°00.82'  
W78°09.18'

SWABY  
N37° 52.38'  
W76° 31.20'  
9000

HOPEWELL  
112.0 HPW   
Chan 57

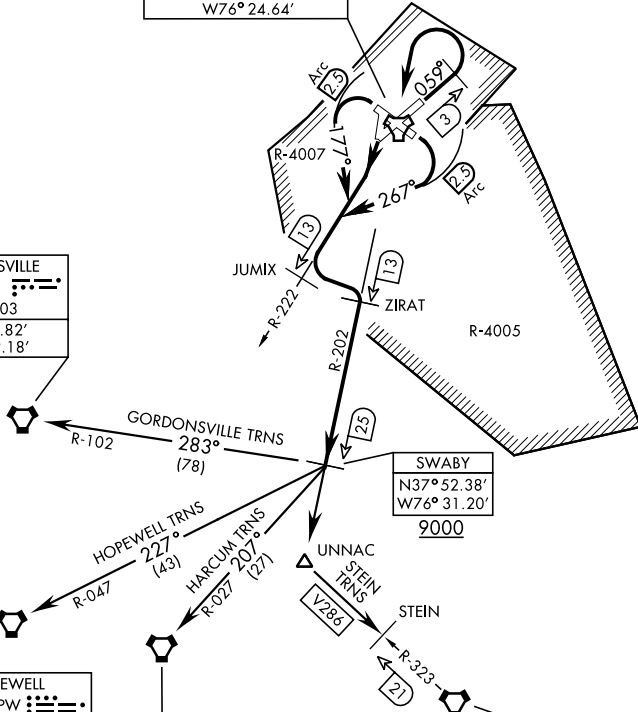
N37°19.73'  
W77°06.96'

HARCUM  
108.8 HCM   
Chan 25

N37°26.92'  
W76°42.68'

CAPE CHARLES  
112.2 CCV   
Chan 59

N37°20.85'  
W75°59.86'



NE-3, 17 APR 2025 to 15 MAY 2025

NE-3, 17 APR 2025 to 15 MAY 2025

ATC BRIEF  
REQUIRED  
135.2 316.125

Note: Chart not to scale  
(NARRATIVE ON FOLLOWING PAGE)

SWABY NINE DEPARTURE (SWABY9.SWABY)

PATUXENT RIVER, MARYLAND