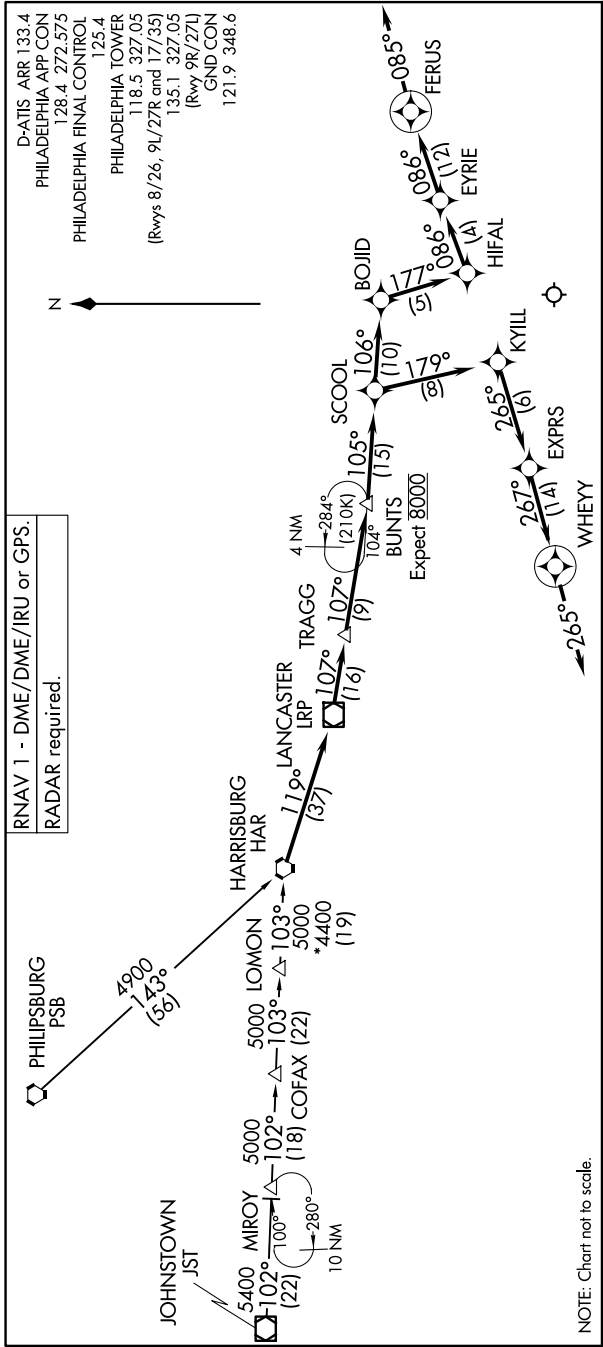


BOJID FOUR ARRIVAL (RNAV)

NE-4, 17 APR 2025 to 15 MAY 2025



D-ATIS ARR 133.4
 PHILADELPHIA APP CON
 128.4 272.575
 PHILADELPHIA FINAL CONTROL
 125.4
 PHILADELPHIA TOWER
 118.5 327.05
 (Rwys 8/26, 9L/27R and 17/35)
 135.1 327.05
 (Rwy 9R/27L)
 GND CON
 121.9 348.6

RNAV 1 - DME/DME/IRU or GPS.
 RADAR required.

ARRIVAL ROUTE DESCRIPTION

JOHNSTOWN TRANSITION (JST.BOJID4):
PHILIPSBURG TRANSITION (PSB.BOJID4):

From HAR VORTAC on track 119° to LRP LOMON, then on track 107° to TRAGG, then on track 107° to BUNTS.
LANDING RUNWAYS 9L/R: From BUNTS on track 105° to SCOOOL, then on track 179° to KYILL, then on track 265° to EXPRS, then on track 267° to WHEYY, then on heading 179°. Expect RADAR vectors to final approach course.
LANDING RUNWAYS 27L/R: From BUNTS on track 105° to SCOOOL, then on track 106° to BOJID, then on track 177° to HIFAL, then on track 086° to EYRIE, then on heading 085°. Expect RADAR vectors to final approach course.

NE-4, 17 APR 2025 to 15 MAY 2025