

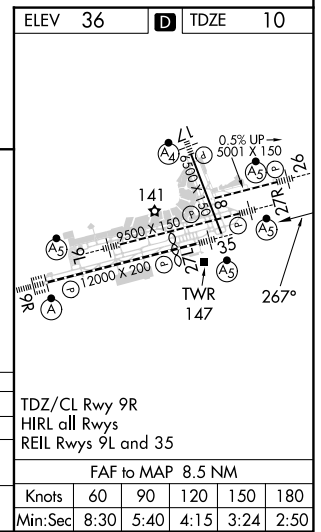
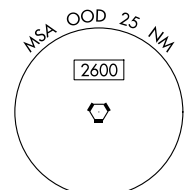
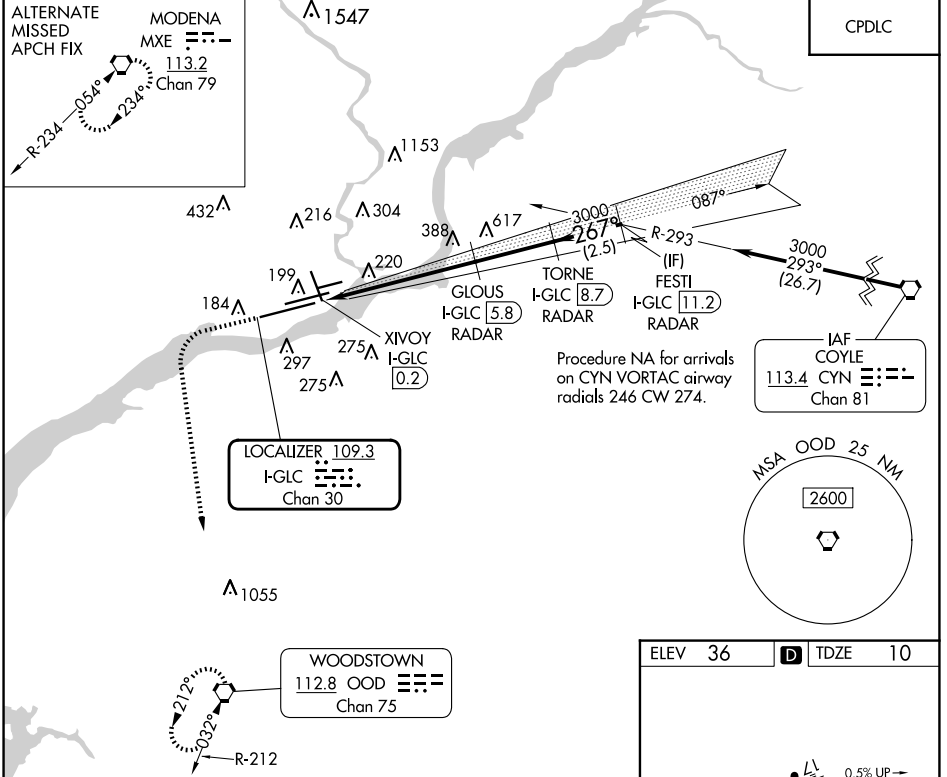
LOC/DME I-GLC 109.3 Chan 30	APP CRS 267°	Rwy Idg TDZE Apt Elev 9912 10 36
--	------------------------	--

ILS or LOC RWY 27L

PHILADELPHIA INTL (PHL)

DME or RADAR required.	MALSR	MISSED APPROACH: Climb to 1500 then climbing left turn to 3000 direct OOD VORTAC and hold.
------------------------	-------	--

D-ATIS ARR 133.4 DEP 135.925	PHILADELPHIA APP CON 124.35 319.15	PHILADELPHIA TOWER 118.5 327.05 (Rwys 9L/27R, 8/26 and 17/35) 135.1 327.05 (Rwy 9R/27L)	GND CON 121.9 348.6	CLNC DEL 118.85 348.6
--	--	---	-------------------------------	---------------------------------



1500	3000	OOD	VGSi and ILS glidepath not coincident (VGSi Angle 3.00°/TCH 73).			
I-GLC	I-GLC		TORNE I-GLC 8.7 RADAR	FESTI I-GLC 11.2 RADAR		
DME ANTENNA	XIVOY I-GLC 0.2		GLOUS I-GLC 5.8 RADAR			
			3000	267°	3000	GS 3.00° TCH 57
			2060		3000	
			0.7	0.8	4.8 NM	2.9 NM
CATEGORY	A	B	C	D		
S-ILS 27L*	210/24		200 (200-1/2)			
S-LOC 27L	560/24	550 (600-1/2)	560/60	550 (600-1 1/4)		
C CIRCLING	560-1 524 (600-1)	600-1 564 (600-1)	620-1 5/8 584 (600-1%)	720-2 1/4 684 (700-2 1/4)		

NE-4, 17 APR 2025 to 15 MAY 2025

NE-4, 17 APR 2025 to 15 MAY 2025