

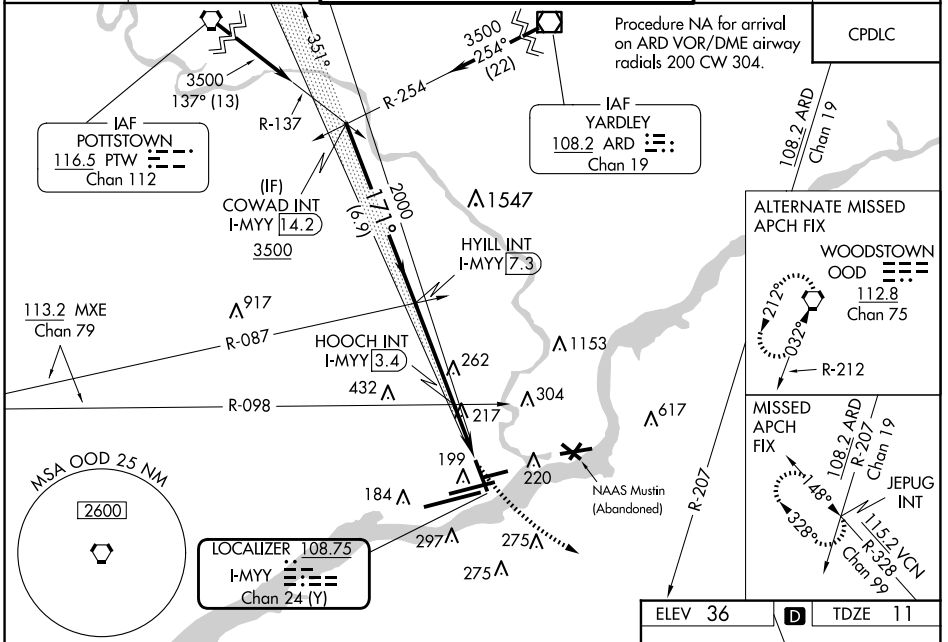
LOC/DME I-MYY 108.75 Chan 24 (Y)	APP CRS 171°	Rwy Idg 6500 TDZE 11 Apt Elev 36
-----------------------------------------------	------------------------	-------------------------------------------------------------

ILS Z or LOC RWY 17

PHILADELPHIA INTL (PHL)

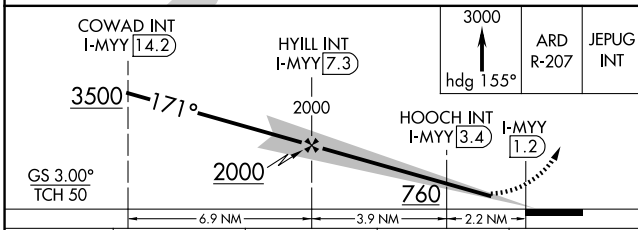
<p>⚠ Inop table does not apply to S-ILS 17 all Cats and S-LOC 17 Cat A. For inop ALS, increase S-LOC 17 Cat C visibility to 2 SM. HOOCH fix minimums: inop table does not apply to Cats A/B. Rwy 17 helicopter visibility reduction below RVR 5000 NA.</p>	MALSF	MISSED APPROACH: Climb to 3000 on heading 155° and ARD VOR/DME R-207 to JEPUG INT and hold.

D-ATIS ARR 133.4 DEP 135.925	PHILADELPHIA APP CON 124.35 319.15	PHILADELPHIA TOWER 118.5 327.05 (Rwys 9L/27R, 8/26 and 17/35) 135.1 327.05 (Rwy 9R/27L)	GND CON 121.9 348.6	CLNC DEL 118.85 348.6
--------------------------------------------------	----------------------------------------------	-------------------------------------------------------------------------------------------------------------	-------------------------------	---------------------------------



NE-4, 17 APR 2025 to 15 MAY 2025

NE-4, 17 APR 2025 to 15 MAY 2025



ELEV 36	D	TDZE 11
---------	----------	---------

171°

0.5% UP
5001 X 150

141

147

150

155

160

165

170

175

180

185

190

195

200

205

210

215

220

225

230

235

240

245

250

255

260

265

270

275

280

285

290

295

300

305

310

315

320

325

330

335

340

345

350

355

360

365

370

375

380

385

390

395

400

405

410

415

420

425

430

435

440

445

450

455

460

465

470

475

480

485

490

495

500

505

510

515

520

525

530

535

540

545

550

555

560

565

570

575

580

585

590

595

600

605

610

615

620

625

630

635

640

645

650

655

660

665

670

675

680

685

690

695

700

705

710

715

720

725

730

735

740

745

750

755

760

765

770

775

780

785

790

795

800

805

810

815

820

825

830

835

840

845

850

855

860

865

870

875

880

885

890

895

900

905

910

915

920

925

930

935

940

945

950

955

960

965

970

975

980

985

990

995

1000

TWR 147

2000 X 200

12000 X 200

TDZ/CL Rwy 9R
HIRL all Rwys
REIL Rwys 9L and 35

FAF to MAP 6.1 NM

Knots	60	90	120	150	180
Min:Sec	6:06	4:04	3:03	2:26	2:02