

CASCADE FOUR DEPARTURE (RNAV)

AL-330 (FAA)

PORTLAND INTL (PDX)
PORTLAND, OREGON

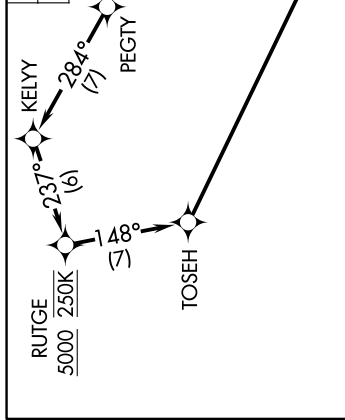
NW-1, 17 APR 2025 to 15 MAY 2025

PORTLAND/DEP CON
118.1 284.6
D-ATIS
128.35 269.9
CLNC DEL
120.125 318.1
CPDIC
GND CON
121.9 348.6

PORTLAND TOWER
118.7 257.8 (Rwy 10L-28R)
123.775 251.125 (Rwys 3-21, 10R-28L)

**TOP ALTITUDE:
ASSIGNED BY ATC**

RNAV 1 - DME/DME/IRU or GPS required.
RADAR required for non-GPS equipped aircraft.



DEPARTURE ROUTE DESCRIPTION

TAKEOFF RUNWAY 10L: Climb on heading 103° to intercept course 082° to RIVRR, then on depicted route to cross CHISM at or above 10100, thence...

TAKEOFF RUNWAY 10R: Climb on heading 103° to intercept course 078° to RIVRR, then on depicted route to cross CHISM at or above 10100, thence...

TAKEOFF RUNWAY 28L: Climb direct PEGTY, then on depicted route to cross CHISM at or above 10100, thence...

TAKEOFF RUNWAY 28R: Climb on heading 283° to intercept course 269° to PEGTY, then on depicted route to cross CHISM at or above 10100, thence... on transition, maintain ATC assigned altitude. Expect filed altitude 10 minutes after departure.

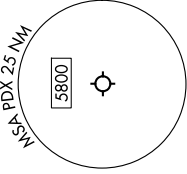
DESCHUTES TRANSITION (CASCD4.DSD)
JUDAH TRANSITION (CASCD4.JUDAH)
PUHTS TRANSITION (CASCD4.PUHTS)
SYNKR TRANSITION (CASCD4.SYNKR)

TAKEOFF MINIMUMS

Rwys 10L/R: Standard with minimum climb of 500'/NM to 540.

Rwy 28L: Standard with minimum climb of 350'/NM to 540.

Rwy 28R: Standard with minimum climb of 300'/NM to 540.



NOTE: Jet aircraft only.
NOTE: Chart not to scale.

NW-1, 17 APR 2025 to 15 MAY 2025