

HI-TACAN RWY 10R

TACAN CBU Chan 29	APCH CRS 111°	Rwy ldg 11,000 TDZE 24 Arpt Elev 31
-----------------------------	-------------------------	--

[USAF]

PORTLAND INTL (KPDX)

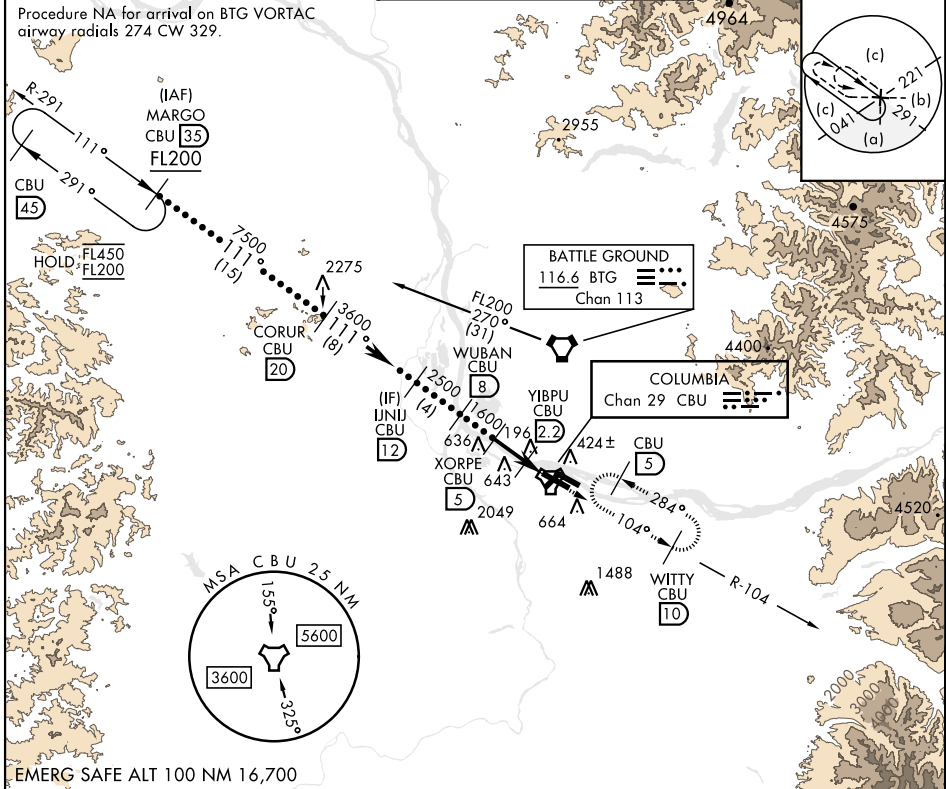
▽ * When ALS inop, increase CAT E vis to 1 1/4 miles.



MISSED APPROACH: Climb to 4000 on CBU TACAN R-104 to WITTY/CBU 10 DME and hold, continue climb-in-hold to 4000.

ATIS 128.35 269.9	APP CON 118.1 284.6 (100°-279°) 124.35 299.2 (280°-099°)	TOWER 118.7 257.8 Rwy 10L-28R 123.775 251.125 Rwy 3-21, 10R-28L	GND CON 121.9 348.6	CLNC DEL 120.125 318.1
-----------------------------	--	---	-------------------------------	----------------------------------

Procedure NA for arrival on BTG VORTAC airway radials 274 CW 329.



EMERG SAFE ALT 100 NM 16,700

<p>VGSI and ILS glidepath not coincident (VGSI Angle 3.00/TCH 71)</p> <p>MARGO CBU 35 FL200 711°</p> <p>CORUR CBU 20 7500</p> <p>UNJU CBU 12 3600</p> <p>WUBAN CBU 8 2500</p> <p>XORPE CBU 5 1600</p> <p>YIBPU CBU 2.2 640</p> <p>TACAN 0.6</p> <p>4.4 NM</p>		<p>4000 CBU R-104</p> <p>WITTY CBU 10</p>	<p>ELEV 31</p> <p>TDZE 24</p> <p>Rwy 10L ldg 8535'</p> <p>Rwy 28R ldg 9290'</p>
CATEGORY	C	D	E
S-10R *	460/40	436	(500-34)
CIRCLING	1020-3	989 (1000-3)	1140-3 1109 (1200-3)
<p>REIL Rwy 3, 21 TDZL/CL Rwy 10R MIRL Rwy 3-21 HIRL Rwy 10L-28R, 28L-10R</p>			

HI-TACAN RWY 10R

NW-1, 17 APR 2025 to 15 MAY 2025

NW-1, 17 APR 2025 to 15 MAY 2025