

LOC/DME I-PDX <b>110.5</b> Chan <b>42</b>	APP CRS <b>103°</b>	Rwy Idg <b>11000</b> TDZE <b>24</b> Apt Elev <b>31</b>
---	------------------------	--

# ILS RWY 10R (SA CAT I)

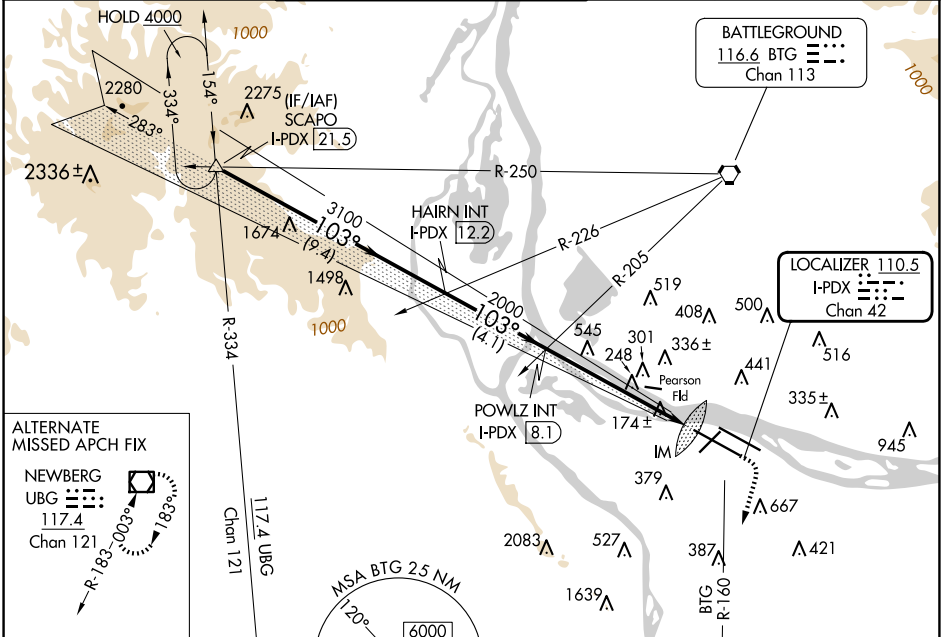
PORTLAND INTL (PDX)

**Simultaneous approach authorized.**  
Requires specific OPSPEC, MSPEC, or LOA approval and use of HUD to DH.

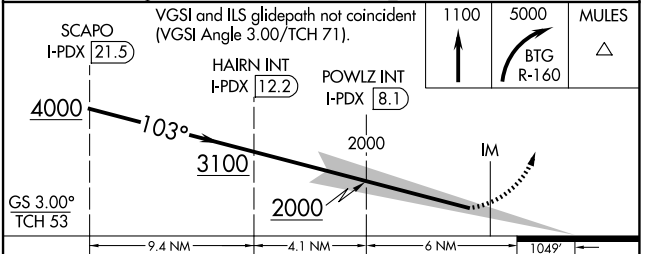
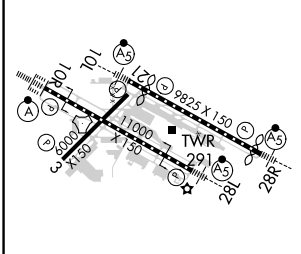
ALSF-2

MISSED APPROACH: Climb to 1100 then climbing right turn to 5000 on BTG VORTAC R-160 to MULES/BTG 17.7 DME and hold, continue climb-in-hold to 5000.

D-ATIS <b>128.35</b> <b>269.9</b>	PORTLAND APP CON <b>124.35 299.2</b>	PORTLAND TOWER Rwys 10L-28R <b>118.7 257.8</b> Rwys 3-21, 10R-28L <b>123.775 251.125</b>	GND CON <b>121.9 348.6</b>	CLNC DEL <b>120.125 318.1</b>	CPDLC
---	---	--	-------------------------------	----------------------------------	-------



ELEV 31	<b>D</b>	TDZE 24
---------	----------	---------



CATEGORY	A	B	C	D
S-ILS 10R	RA 157/14 150 DA 174			

**SA CATEGORY I ILS-SPECIAL AIRCREW & AIRCRAFT CERTIFICATION REQUIRED**

NW-1, 17 APR 2025 to 15 MAY 2025

NW-1, 17 APR 2025 to 15 MAY 2025