


LOC/DME I-VDG <b>111.3</b> Chan <b>50</b>	APP CRS <b>103°</b>	Rwy Idg TDZE Apt Elev <b>8535</b> <b>30</b> <b>31</b>
---	------------------------	--

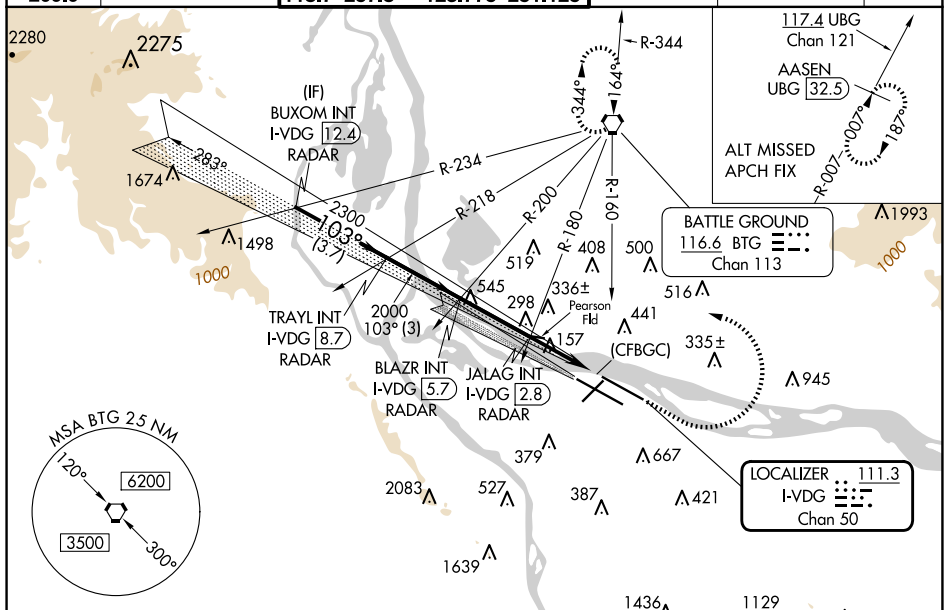
# ILS or LOC RWY 10L

PORTLAND INTL (PDX)

**⚠** Simultaneous approach authorized with Rwy 10R.  
**⚠** For inoperative MALS/R, increase S-ILS visibility all Cats to RVR 4500.  
 S-LOC Cat E visibility to RVR 6000. RADAR or DME required.

**MALS/R**  
  
**MISSED APPROACH:** Climb to 800 then climbing left turn to 4200 on BTG VORTAC R-160 to BTG VORTAC and hold, continue climb-in-hold to 4200.

D-ATIS <b>128.35</b> <b>269.9</b>	PORTLAND APP CON <b>124.35 299.2</b>	PORTLAND TOWER Rwy 10L-28R <b>118.7 257.8</b>	Rwys 3-21, 10R-28L <b>123.775 251.125</b>	GND CON <b>121.9 348.6</b>	CLNC DEL <b>120.125 318.1</b>	CPDLC
---	---	---	--	-------------------------------	----------------------------------	-------

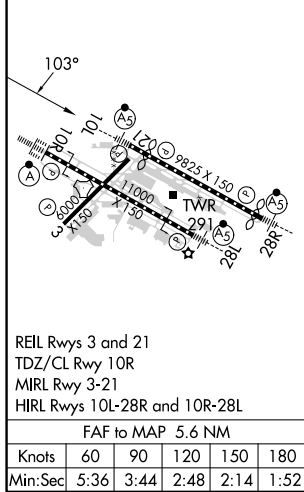


NW-1, 17 APR 2025 to 15 MAY 2025

NW-1, 17 APR 2025 to 15 MAY 2025

ELEV 31	<b>D</b>	TDZE 30
---------	----------	---------

## RADAR REQUIRED



	BUXOM INT I-VDG [12.4] RADAR	TRAYL INT I-VDG [8.7] RADAR	BLAZR INT I-VDG [5.7] RADAR	JALAG INT I-VDG [2.8] RADAR	BTG BTG R-160
	3000	2300	2000	*1100	
GS 3.00° TCH 49	3.7 NM	3 NM	2.8 NM	2.7 NM	0.5 NM
CATEGORY	A	B	C	D	E
S-ILS 10L	293/24		263 (300-½)		
S-LOC 10L	420/24		390 (400-½)		420/35 390 (400-¾)
<b>C</b> CIRCLING	720-1 689 (700-1)	760-1 729 (800-1)	1060-3	1029 (1100-3)	1140-3 1109 (1200-3)