

LAVAA SEVEN DEPARTURE (RNAV)

AL-330 (FAA)

PORTLAND INTL (PDX)
PORTLAND, OREGON

NW-1, 17 APR 2025 to 15 MAY 2025

DEPARTURE ROUTE DESCRIPTION

- TAKEOFF RUNWAY 10L:** Climb on heading 103° to intercept course 082° to RIVRR, then on depicted route to LAVAA, thence. . . .
- TAKEOFF RUNWAY 10R:** Climb on heading 103° to intercept course 078° to RIVRR, then on depicted route to LAVAA, thence. . . .
- TAKEOFF RUNWAY 28L:** Climb direct PEGTY, then on track 284° to KELLY, then on depicted route to LAVAA, thence. . . .
- TAKEOFF RUNWAY 28R:** Climb on heading 283° to intercept course 269° to PEGTY, then on depicted route to LAVAA, thence. . . .
- . . . on transition, maintain ATC assigned altitude, expect filed altitude 10 minutes after departure.

PENDELTON TRANSITION (LAVAA7.PDT)

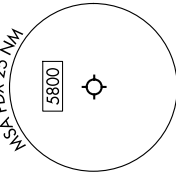
SUNED TRANSITION (LAVAA7.SUNED)

RNAV 1 - DME/DME/IRU or GPS required.

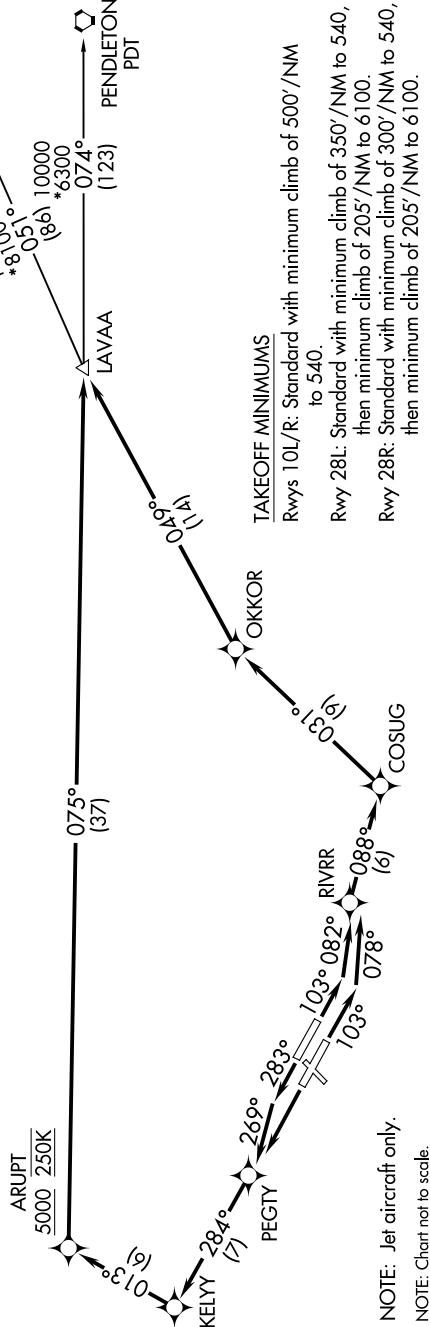
RADAR required for non-GPS equipped aircraft.

**TOP ALTITUDE:
ASSIGNED BY ATC**

N



PORTLAND DEP CON
124.35 299.2
D-ATIS
128.35 269.9
CLNC DEL
120.125 318.1
CPDIC
GND CON
121.9 348.6
PORTLAND TOWER
118.7 257.8 (Rwy 10L-28R)
123.775 251.125 (Rwys 3-21, 10R-28L)



TAKEOFF MINIMUMS

Rwys 10L/R: Standard with minimum climb of 500'/NM to 540.

Rwy 28L: Standard with minimum climb of 350'/NM to 540, then minimum climb of 205'/NM to 6100.

Rwy 28R: Standard with minimum climb of 300'/NM to 540, then minimum climb of 205'/NM to 6100.

NOTE: Jet aircraft only.

NOTE: Chart not to scale.

NW-1, 17 APR 2025 to 15 MAY 2025

LAVAA SEVEN DEPARTURE (RNAV)