

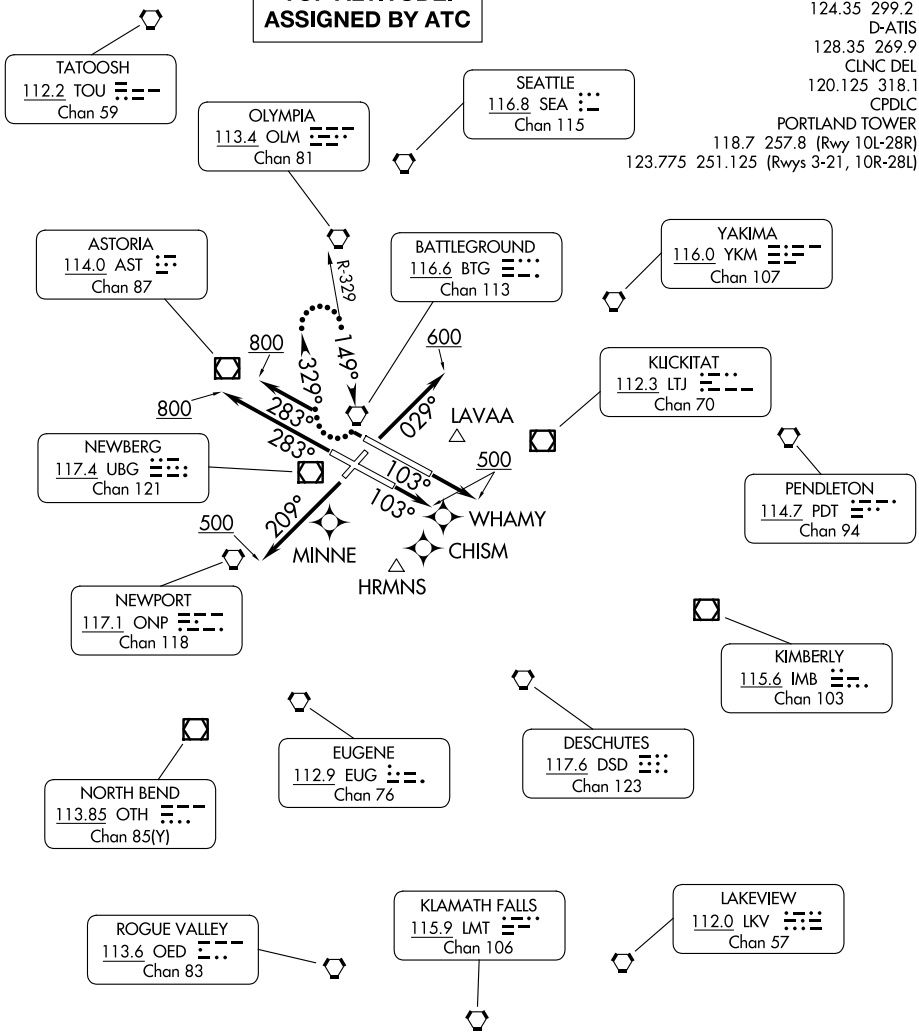
PORTLAND TWO DEPARTURE

AL-330 (FAA)

PORTLAND INTL (PDX)
PORTLAND, OREGON

**TOP ALTITUDE:
ASSIGNED BY ATC**

PORTLAND DEP CON
124.35 299.2
D-ATIS
128.35 269.9
CLNC DEL
120.125 318.1
CPDLC
PORTLAND TOWER
118.7 257.8 (Rwy 10L-28R)
123.775 251.125 (Rwys 3-21, 10R-28L)



NW-1, 17 APR 2025 to 15 MAY 2025

NW-1, 17 APR 2025 to 15 MAY 2025

TAKEOFF MINIMUMS

- Rwy 3: Standard with minimum climb of 375' per NM to 5300.
- Rwy 10L: Standard with minimum climb of 350' per NM to 5900.
- Rwy 10R: Standard with minimum climb of 400' per NM to 5000.
- Rwy 21: Standard with minimum climb of 430' per NM to 4000.
- Rwy 28L: Standard with minimum climb of 375' per NM to 4500.
- Rwy 28R: Standard with minimum climb of 340' per NM to 5400.

NOTE: RADAR required.

NOTE: Chart not to scale.

(CONTINUED ON FOLLOWING PAGE)

PORTLAND TWO DEPARTURE

PORTLAND, OREGON
PORTLAND INTL (PDX)