

APP CRS	Rwy Idg 11000
283°	TDZE 23
	Apt Elev 31

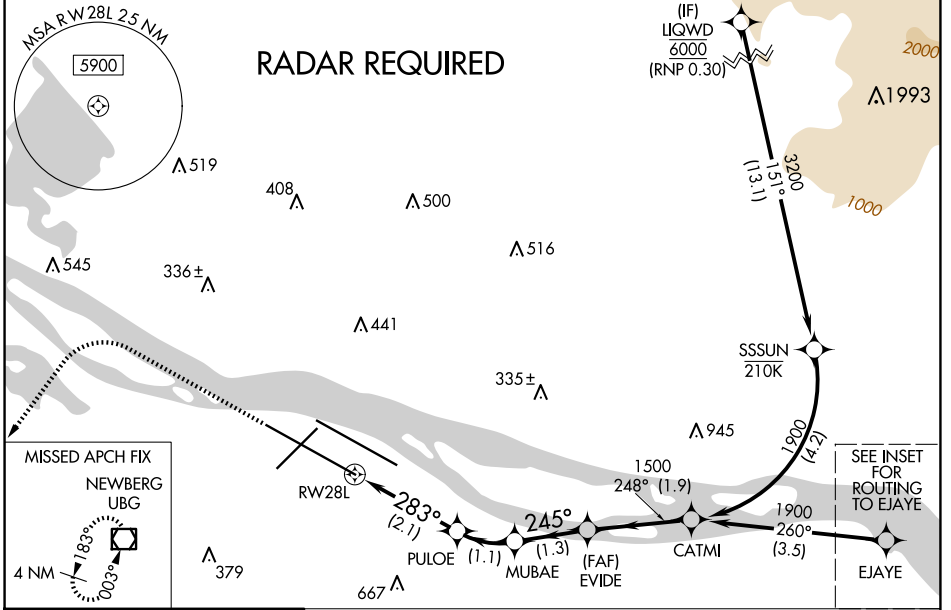
RNAV (RNP) Y RWY 28L

PORTLAND INTL (PDX)

For uncompensated Baro-VNAV systems, procedure NA below -7°C (20°F) or above 54°C (130°F). For inop MALS, increase RNP 0.23 all Cats visibility to RVR 5600 and increase RNP 0.30 all Cats visibility to 1½ mile. Simultaneous approach authorized with Rwy 28R. RF required. GPS required. Use of FD or AP providing RNAV track guidance required during simultaneous operations.

MALS MISSED APPROACH: Climb to 2100 then climbing left turn to 4000 direct UBG VOR/DME and hold.

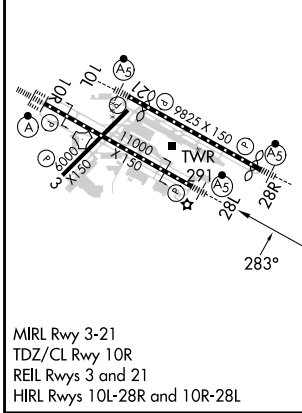
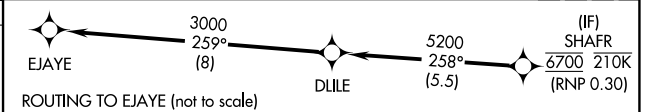
D-ATIS 128.35 269.9	PORTLAND APP CON 124.35 299.2	PORTLAND TOWER Rwy 10L-28R 118.7 257.8 Rwys 3-21, 10R-28L 123.775 251.125	GND CON 121.9 348.6	CLNC DEL 120.125 318.1	CPDLC
---	---	---	-------------------------------	----------------------------------	-------



NW-1, 17 APR 2025 to 15 MAY 2025

NW-1, 17 APR 2025 to 15 MAY 2025

ELEV 31	D	TDZE 23
----------------	----------	----------------



VGSI and RNAV glidepath not coincident (VGSI Angle 3.00/TCH 72).

2100	4000	UBG	
See planview for multiple IF locations.			
PULO	MUBAE	EVIDE	CATMI
743	1082	1500	1900
			GP 3.00° TCH 55
2.1 NM	1.1 NM	1.3 NM	1.9 NM
CATEGORY	A	B	C
RNP 0.23 DA	370/33		347 (400-5/8)
RNP 0.30 DA	476/53		453 (500-1)