

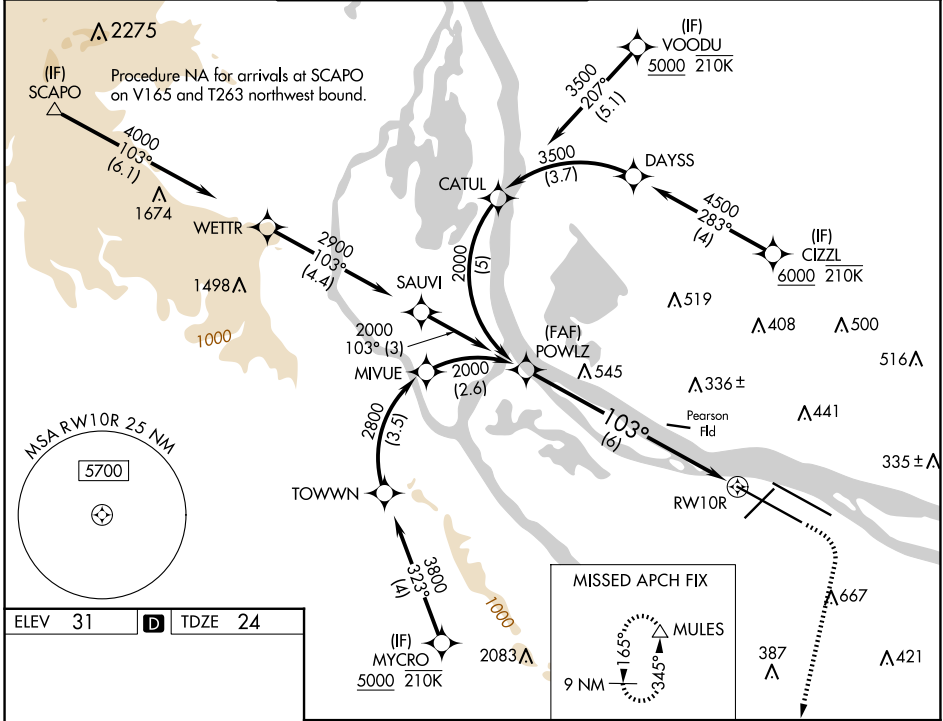
APP CRS	Rwy Idg	11000
103°	TDZE	24
	Apt Elev	31

RNAV (RNP) Z RWY 10R

PORTLAND INTL (PDX)

RNP AR APCH - GPS. Authorization required. From DAYSS, CATUL, or TOWNN: RF.		ALSF-2 	MISSED APPROACH: Climb to 440 then climbing right turn to 5000 direct MULES and hold, continue climb-in-hold to 5000.
<p>▼ For uncompensated Baro-VNAV systems, procedure NA below -5°C or above 54°C. Simultaneous approach authorized. For inop ALS, increase RNP 0.18 all Cats visibility to RVR 4500, increase RNP 0.30 all Cats visibility to RVR 5500.</p>			

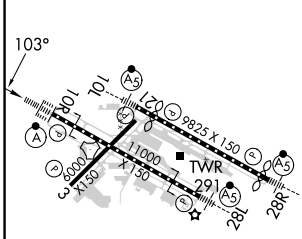
D-ATIS 128.35 269.9	PORTLAND APP CON 124.35 299.2	PORTLAND TOWER Rwy 10L-28R 118.7 257.8	Rwys 3-21, 10R-28L 123.775 251.125	GND CON 121.9 348.6	CLNC DEL 120.125 318.1	CPDLC
---	---	---	--	-------------------------------	----------------------------------	-------



NW-1, 17 APR 2025 to 15 MAY 2025

NW-1, 17 APR 2025 to 15 MAY 2025

ELEV 31	D	TDZE 24
---------	----------	---------



VGSi and RNAV glidepath not coincident (VGSi Angle 3.00/TCH 71).			440	5000	MULES
See planview for multiple IF locations.					
GP 3.00° TCH 53					
6 NM					

CATEGORY	A	B	C	D
RNP 0.18 DA		324/24	300 (300-½)	
RNP 0.30 DA		397/35	373 (400-¾)	

AUTHORIZATION REQUIRED

REIL Rwys 3 and 21
 TDZ/CL Rwy 10R
 MIRL Rwy 3-21
 HIRL Rwys 10L-28R and 10R-28L