

APP CRS	Rwy Idg	11000
283°	TDZE	23
	Apt Elev	31

RNAV (RNP) Z RWY 28L

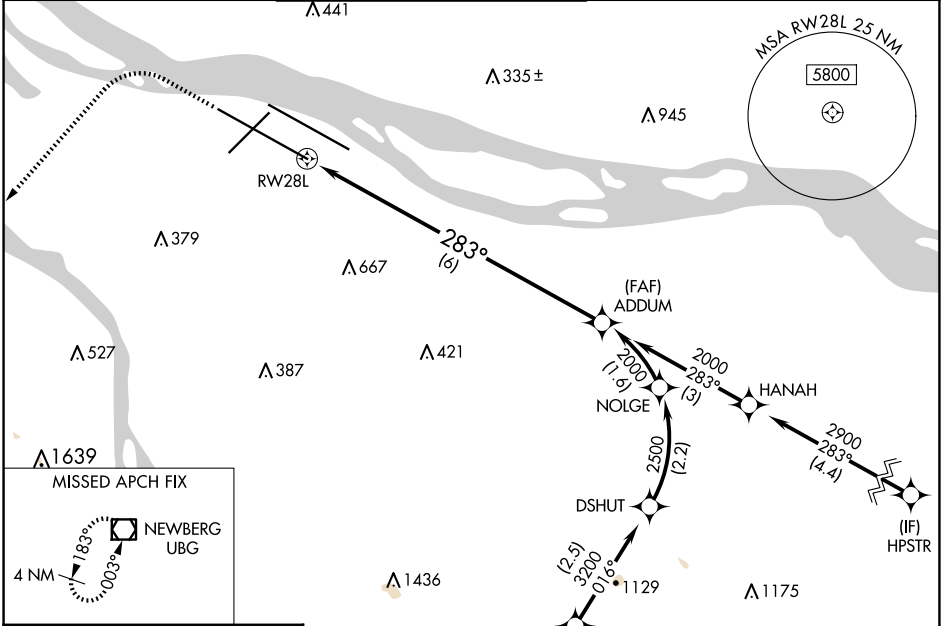
PORTLAND INTL (PDX)

RNP AR APCH - GPS. Authorization required. From DSHUT: RF.

For uncompensated Baro-VNAV systems, procedure NA below -5°C or above 54°C. Simultaneous approach authorized.

MALS/R MISSED APPROACH: Climb to 2100 then climbing left turn to 4000 direct UBG VOR/DME and hold.

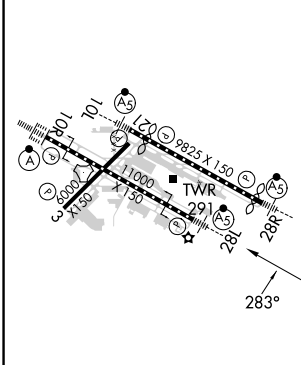
D-ATIS 128.35 269.9	PORTLAND APP CON 124.35 299.2	PORTLAND TOWER Rwy 10L-28R 118.7 257.8 Rwys 3-21, 10R-28L 123.775 251.125	GND CON 121.9 348.6	CLNC DEL 120.125 318.1	CPDLC
---	---	---	-------------------------------	----------------------------------	-------



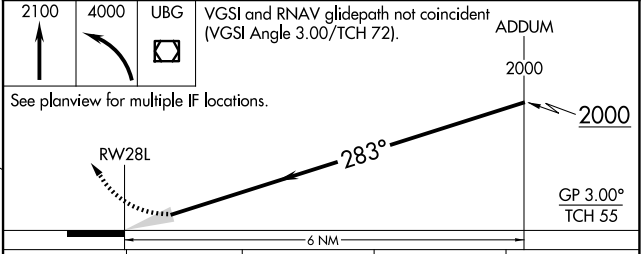
NW-1, 17 APR 2025 to 15 MAY 2025

NW-1, 17 APR 2025 to 15 MAY 2025

ELEV 31	D	TDZE 23
---------	----------	---------



REIL Rwys 3 and 21
TDZ/CL Rwy 10R
MIRL Rwy 3-21
HIRL Rwys 10L-28R and 10R-28L



CATEGORY	A	B	C	D
RNP 0.30 DA	399/60 376 (400-1¼)			

AUTHORIZATION REQUIRED