


| | | |
|-------------|----------|-------------|
| APP CRS | Rwy Idg | 9290 |
| 283° | TDZE | 31 |
| | Apt Elev | 31 |

RNAV (RNP) Z RWY 28R

PORTLAND INTL (PDX)

RNP AR APCH - GPS. Authorization required. From BYKES: RF

▼ For uncompensated Baro-VNAV systems, procedure NA below -5°C or above 54°C. Simultaneous approach authorized. For inop ALS increase RNP 0.10 all Cats visibility to RVR 4500, increase RNP 0.20 all Cats visibility to RVR 5500, and increase RNP 0.30 all Cats visibility to RVR 6000.

MALSR  MISSED APPROACH: Climb to 600 then climbing right turn to 4400 direct BATYL and hold, continue climb-in-hold to 4400.

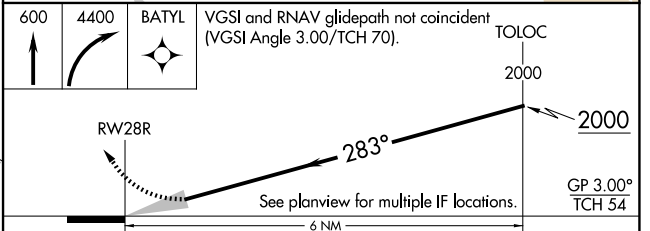
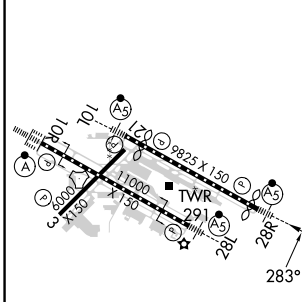
| | | | | | |
|---------------|---------------------|--------------------|--------------------|----------------------|-------|
| D-ATIS | PORTLAND APP CON | PORTLAND TOWER | GND CON | CLNC DEL | CPDLC |
| 128.35 | 124.35 299.2 | Rwy 10L-28R | 121.9 348.6 | 120.125 318.1 | |
| 269.9 | | Rwys 3-21, 10R-28L | | | |



NW-1, 17 APR 2025 to 15 MAY 2025

NW-1, 17 APR 2025 to 15 MAY 2025

| | | | | |
|------|-----------|----------|------|-----------|
| ELEV | 31 | D | TDZE | 31 |
|------|-----------|----------|------|-----------|



| CATEGORY | A | B | C | D |
|-------------|---|--------|-------------|---|
| RNP 0.10 DA | | 322/24 | 291 (300-½) | |
| RNP 0.20 DA | | 400/35 | 369 (400-¾) | |
| RNP 0.30 DA | | 451/40 | 420 (500-¾) | |

REIL Rwys 3 and 21
 TDZ/CL Rwy 10R
 MIRL Rwy 3-21
 HIRL Rwys 10L-28R and 10R-28L

AUTHORIZATION REQUIRED