

TMBRS THREE ARRIVAL (RNAV) Transition Routes AL-330 (FAA)

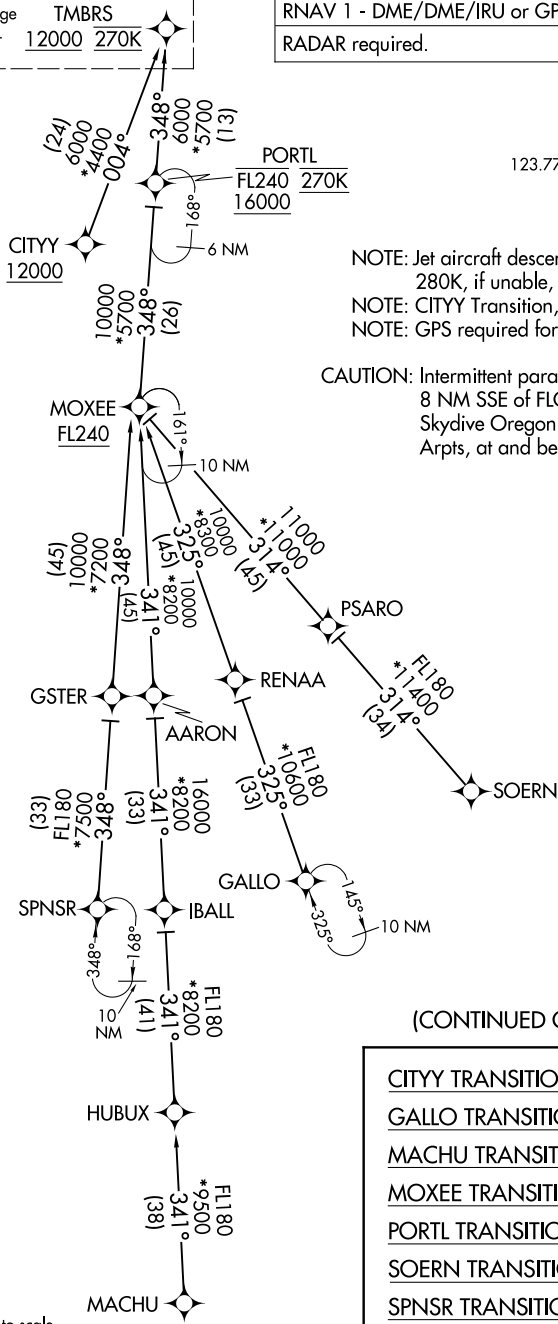
See following page
for arrival routes.

TMBRS
12000 270K

RNAV 1 - DME/DME/IRU or GPS.

RADAR required.

PORTLAND APP CON
124.35 299.2
D-ATIS
128.35 269.9
GND CON
121.9 348.6
PORTLAND TOWER
118.7 257.8 (Rwy 10L-28R)
123.775 251.125 (Rwys 3-21, 10R-28L)



NOTE: Jet aircraft descend via Mach number until 280K, if unable, advise ATC.

NOTE: CITYYY Transition, ATC assigned only.

NOTE: GPS required for CITYYY Transition.

CAUTION: Intermittent parachuting activity within 8 NM SSE of FLOWR in the vicinity of Skydive Oregon (LØ5) and Mulino (459) Apts, at and below 17500.

(CONTINUED ON FOLLOWING PAGE)

- CITYYY TRANSITION (CITYYY.TMBRS3)
- GALLO TRANSITION (GALLO.TMBRS3)
- MACHU TRANSITION (MACHU.TMBRS3)
- MOXEE TRANSITION (MOXEE.TMBRS3)
- PORTL TRANSITION (PORTL.TMBRS3)
- SOERN TRANSITION (SOERN.TMBRS3)
- SPNSR TRANSITION (SPNSR.TMBRS3)

NOTE: Chart not to scale.

TMBRS THREE ARRIVAL (RNAV) Transition Routes

NW-1, 17 APR 2025 to 15 MAY 2025

NW-1, 17 APR 2025 to 15 MAY 2025