

WAAS CH <b>90212</b> <b>W28A</b>	APP CRS <b>273°</b>	Rwy Idg TDZE Apt Elev	<b>6000</b> <b>473</b> <b>534</b>
--	------------------------	-----------------------------	---

# RNAV (GPS) RWY 28

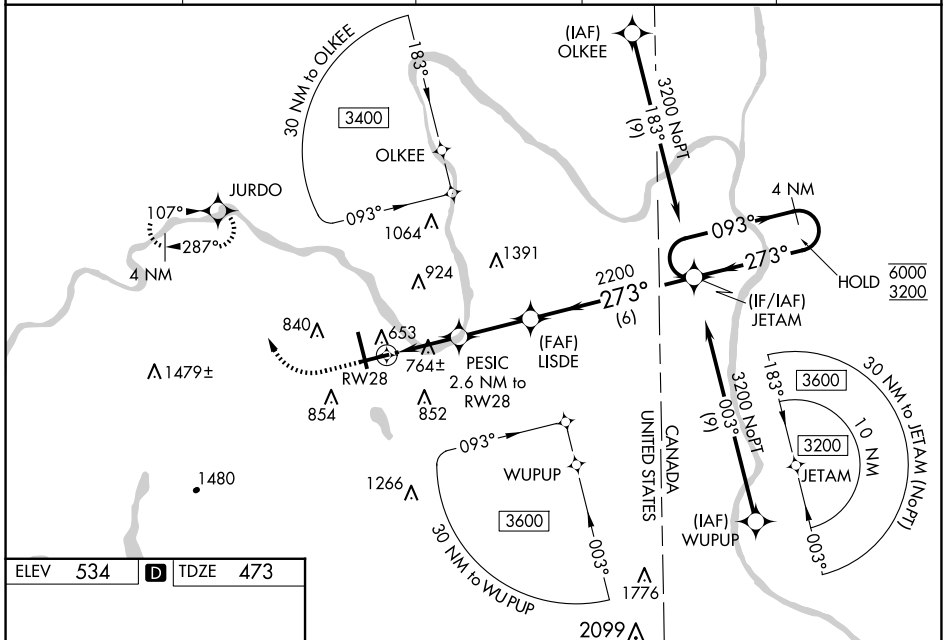
PRESQUE ISLE INTL (PQI)

RNP APCH - GPS.

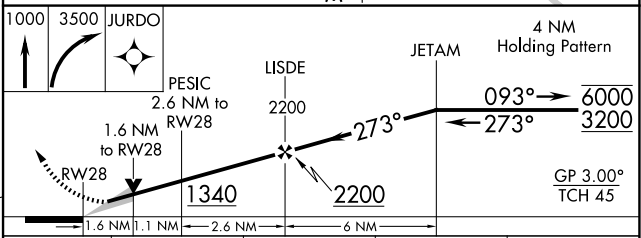
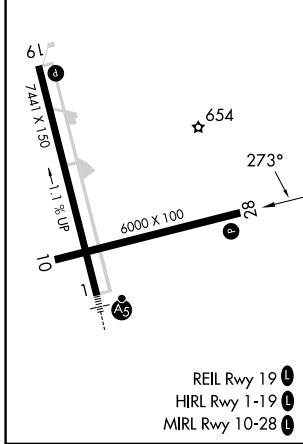
▼ For uncompensated Baro-VNAV systems, LNAV/VNAV NA below -16°C or above 54°C.  
 ▲ Circling Rwy 10 NA at night. Rwy 28 helicopter visibility reduction below ¼ SM NA.  
 ☒ When local altimeter setting not received, use HUL altimeter setting: increase LPV DA to 855 feet and all visibilities ¼ SM; increase LNAV/VNAV DA to 1175 feet and all visibilities ¼ SM; increase all MDAs 100 feet and LNAV visibility Cats C and D ¼ SM, and Circling visibility Cat C ½ SM and Cat D ¼ SM. Baro-VNAV and VDP NA when using HUL altimeter setting.

MISSED APPROACH: Climb to 1000 then climbing right turn to 3500 direct JURDO and hold. Continue climb-in-hold to 3500.

AWOS-3PT <b>118.025</b>	BOSTON CENTER <b>124.75 239.05</b>	CLNC DEL <b>121.6</b>	UNICOM <b>122.8</b> (CTAF)	<b>122.6</b>
----------------------------	---------------------------------------	--------------------------	-------------------------------	--------------



ELEV 534	<b>D</b>	TDZE 473
----------	----------	----------



CATEGORY	A	B	C	D
LPV DA		765-1	292 (300-1)	
LNAV/VNAV DA		1085-1¼	612 (600-1¼)	
LNAV MDA	1020-1	547 (500-1)	1020-1½	547 (500-1½)
<b>CIRCLING</b>	1140-1 606 (700-1)	1160-1 626 (700-1)	1320-2¼ 786 (800-2¼)	1380-2¾ 846 (900-2¾)

NE-1, 17 APR 2025 to 15 MAY 2025

NE-1, 17 APR 2025 to 15 MAY 2025