

VOR/DME PQI <b>116.4</b> Chan <b>111</b>	APP CRS <b>180°</b>	Rwy Idg TDZE <b>534</b> Apt Elev <b>534</b>
--	------------------------	---

# VOR RWY 19

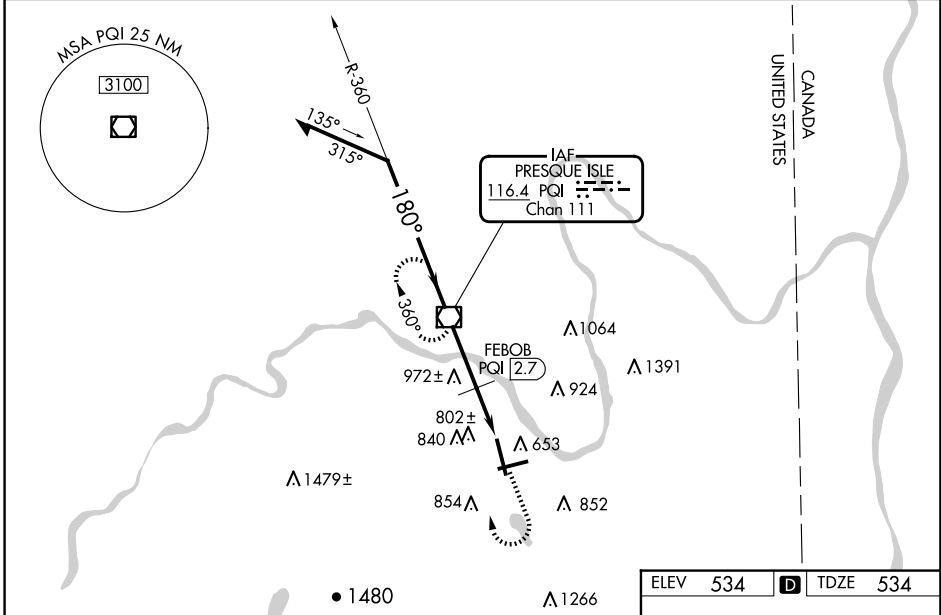
PRESQUE ISLE INTL (PQI)

DME required.

**⚠** Rwy 19 helicopter visibility reduction below 3/4 SM NA. When local altimeter setting not received, use HUL altimeter setting: increase all MDAs 100 feet and S-19 visibility Cats C and D 1/2 SM, and Circling visibility Cats A and D 1/4 SM and Cat C 1/2 SM. FEBOB Fix minimums: increase S-19 visibility Cats C and D 1/4 SM, and Circling visibility Cat C 1/2 SM and Cat D 1/4 SM. VDP NA with HUL altimeter setting. Circling Rwy 10 NA at night.

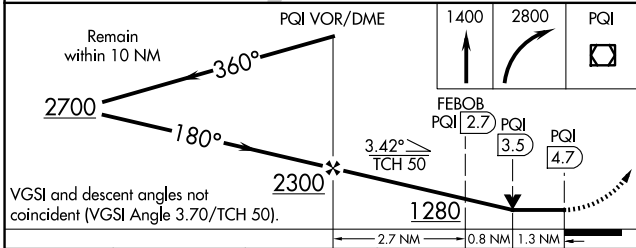
**⚠** MISSED APPROACH: Climb to 1400 then climbing right turn to 2800 direct PQI VOR/DME and hold, continue climb-in-hold to 2800.

AWOS-3PT <b>118,025</b>	BOSTON CENTER <b>124.75 239.05</b>	CLNC DEL <b>121.6</b>	UNICOM <b>122.8 (CTAF)</b>	<b>122.6</b> <b>⓪</b>
----------------------------	---------------------------------------	--------------------------	-------------------------------	-----------------------

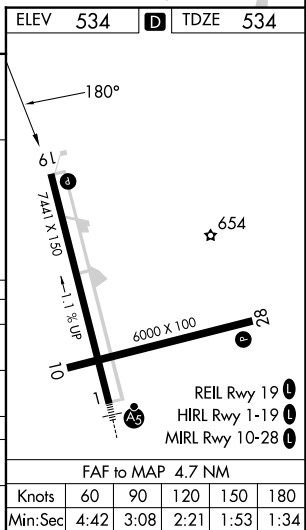


NE-1, 17 APR 2025 to 15 MAY 2025

NE-1, 17 APR 2025 to 15 MAY 2025



CATEGORY	A	B	C	D
S-19	1280-1 746 (800-1)	1280-1¼ 746 (800-1¼)	1280-2¼ 746 (800-2¼)	1280-2½ 746 (800-2½)
<b>C</b> CIRCLING	1280-1 746 (800-1)	1280-1¼ 746 (800-1¼)	1320-2¼ 786 (800-2¼)	1380-2¾ 846 (900-2¾)
FEBOB FIX MINIMUMS				
S-19	1080-1 546 (600-1)	1080-1½ 546 (600-1½)	1080-1¾ 546 (600-1¾)	
<b>C</b> CIRCLING	1140-1 606 (700-1)	1160-1 626 (700-1)	1320-2¼ 786 (800-2¼)	1380-2¾ 846 (900-2¾)



FAF to MAP 4.7 NM	
Knots	60 90 120 150 180
Min:Sec	4:42 3:08 2:21 1:53 1:34