

WIPOR THREE ARRIVAL (RNAV)

NE-1, 17 APR 2025 to 15 MAY 2025

ARRIVAL ROUTE DESCRIPTION

ALBANY TRANSITION (ALB. WIPOR3):

HANCOCK TRANSITION (HNK. WIPOR3):

HINGZ TRANSITION (HINGZ. WIPOR3):

From WIPOR on track 142° to ORW VOR/DME, then on track 129° to SAUGY.

Landing KPVD Rwys 5, 34: From SAUGY on track 129° to LAFAY, then on track 129°.

Expect radar vectors to final approach course.

Landing KPVD Rwys 16, 23: From SAUGY on track 055° to WAWIK, then on track 049° to SEABE.

Then on track 047° to NOSUH, then on track 047°. Expect radar vectors to final approach course.

Landing KOGU, KUUU, KEWB, all rwys: From WIPOR on track 142° to ORW VOR/DME, then on

track 129° to SAUGY, then on track 129° to LAFAY, then on track 129°. Expect radar vectors to

destination airport and final approach course.

Landing KSFZ all rwys: From WIPOR on track 142° to ORW VOR/DME, then on track 129° to SAUGY,

then on track 055° to WAWIK, then on track 049° to SEABE, then on track 047° to NOSUH, then on

track 047°. Expect radar vectors to final approach course.

PROVIDENCE APP CON★
123.675 244.875
EWB ATIS
126.85
PVD D-ATIS
124.2

ALBANY
ALB

HANCOCK
HNK

SHIGY

PONEE

NELIE

Expect to cross 20 NM
NW FL210

WIPOR

Expect 11000 (110)

5000

142°

(110)

5000

129°

(110)

5000

055°

(110)

5000

049°

(111)

5000

047°

(4)

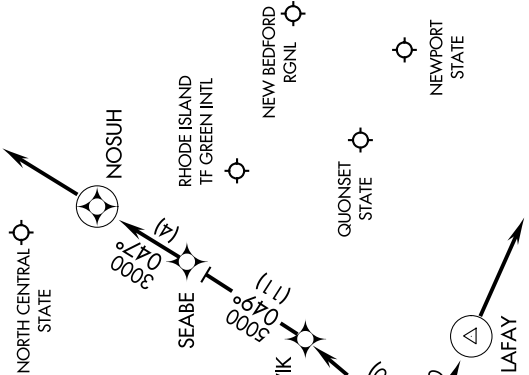
N

NOTE: RADAR required.

NOTE: RNAV 1.

NOTE: DME/DME/IRU or GPS required.

NOTE: Chart not to scale.



WIPOR THREE ARRIVAL (RNAV)

(WIPOR. WIPOR3) 13NOV14

NE-1, 17 APR 2025 to 15 MAY 2025