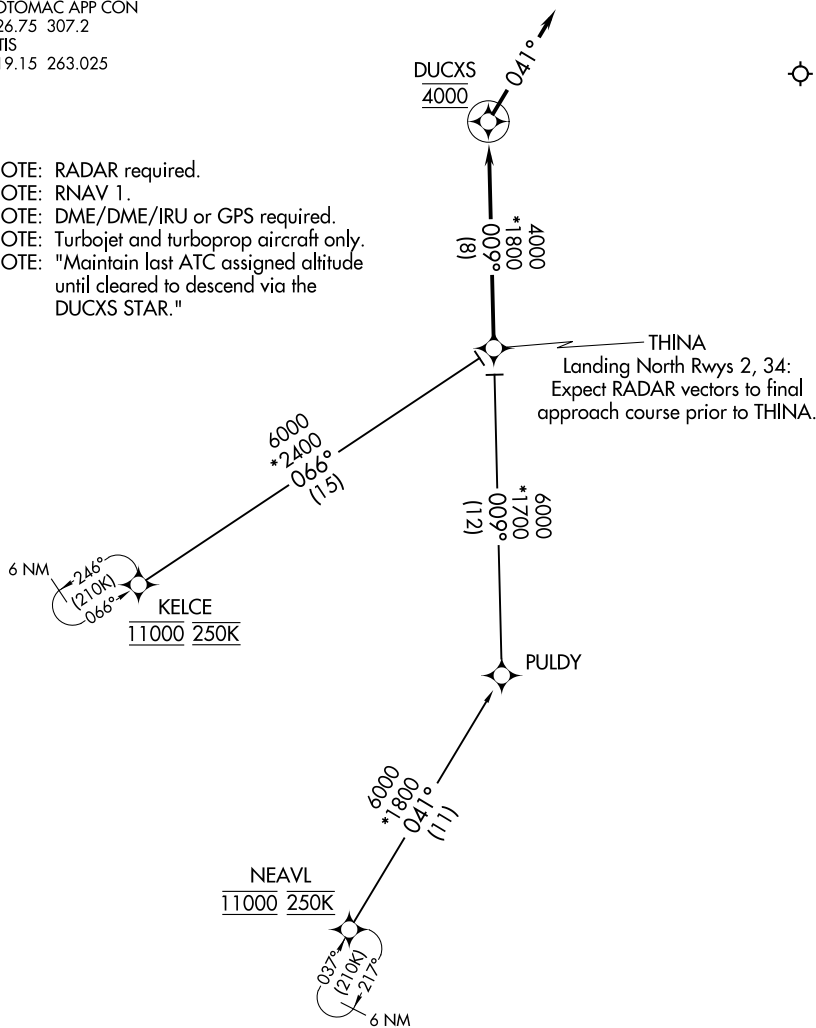


# DUCXS FIVE ARRIVAL (RNAV)

POTOMAC APP CON  
126.75 307.2  
ATIS  
119.15 263.025

- NOTE: RADAR required.
- NOTE: RNAV 1.
- NOTE: DME/DME/IRU or GPS required.
- NOTE: Turbojet and turboprop aircraft only.
- NOTE: "Maintain last ATC assigned altitude until cleared to descend via the DUCXS STAR."



NOTE: Chart not to scale.

## ARRIVAL ROUTE DESCRIPTION

KELCE TRANSITION (KELCE.DUCXS5):  
NEAVL TRANSITION (NEAVL.DUCXS5):

From THINA on track 009° to cross DUCXS at 4000, then on heading 041° or as assigned by ATC. Expect RADAR vectors to final approach course.

NE-3, 17 APR 2025 to 15 MAY 2025

NE-3, 17 APR 2025 to 15 MAY 2025