

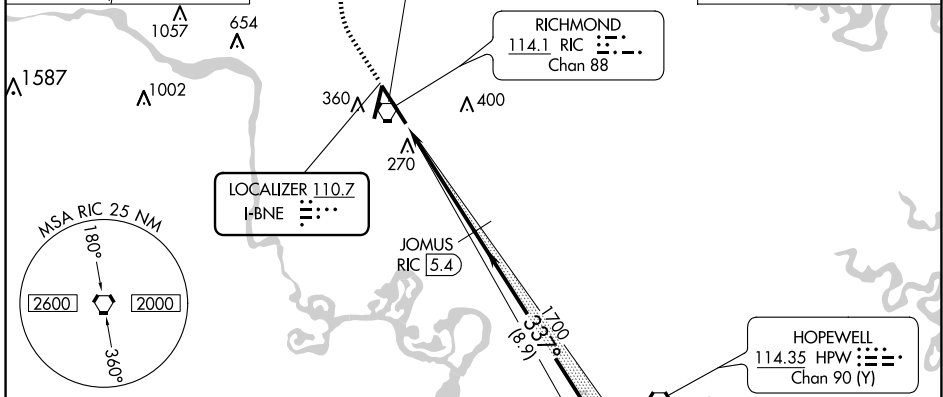
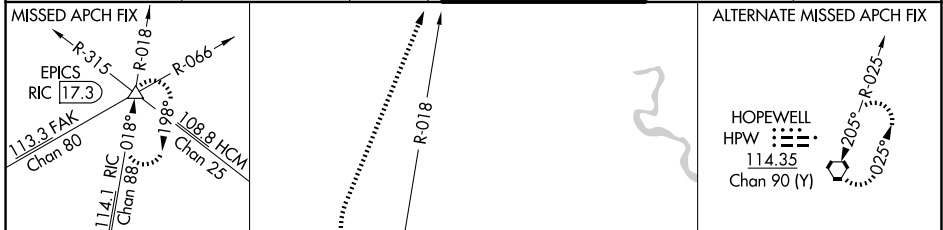
LOC I-BNE <b>110.7</b>	APP CRS <b>337°</b>	Rwy Idg TDZE Apt Elev	<b>9003</b> <b>161</b> <b>168</b>
---------------------------	------------------------	-----------------------------	---

# ILS RWY 34 (SA CAT I)

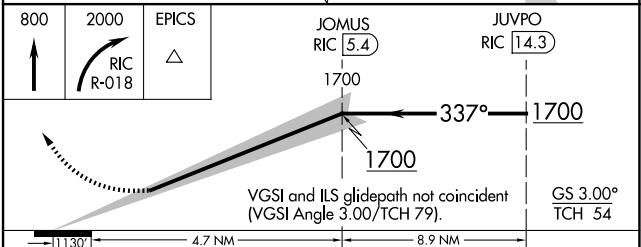
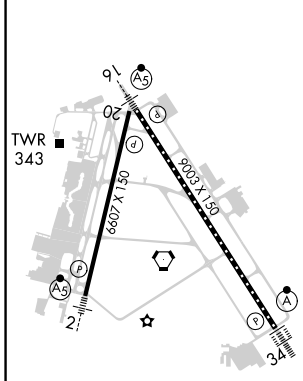
RICHMOND INTL (RIC)

<p>Requires specific OPSPEC, MSPEC, or LOA approval. DME from RIC VORTAC. DME use requires simultaneous reception of I-BNE and RIC DME.</p>	<p>ALSF-2</p>	<p>MISSED APPROACH: Climb to 800 then climbing right turn to 2000 on RIC VORTAC R-018 to EPICS INT/RIC 17.3 DME and hold.</p>
---	---------------	---

<p>ATIS <b>119.15 263.025</b></p>	<p>POTOMAC APP CON <b>126.4 282.375</b> (001°-185°) <b>126.75 307.2</b> (186°-360°)</p>	<p>RICHMOND TOWER <b>121.1 257.8</b></p>	<p>GND CON <b>121.9 348.6</b></p>	<p>CLNC DEL <b>127.55 348.6</b></p>
---------------------------------------	---	--	---------------------------------------	---



ELEV 168	<b>D</b>	TDZE 161
----------	----------	----------



CATEGORY	A	B	C	D
S-ILS 34	RA 156/14 150 DA 311			

**SA CATEGORY I ILS - SPECIAL AIRCREW & AIRCRAFT CERTIFICATION REQUIRED**

NE-3, 17 APR 2025 to 15 MAY 2025

NE-3, 17 APR 2025 to 15 MAY 2025