

# ILS or LOC RWY 2 RICHMOND INTL (RIC)

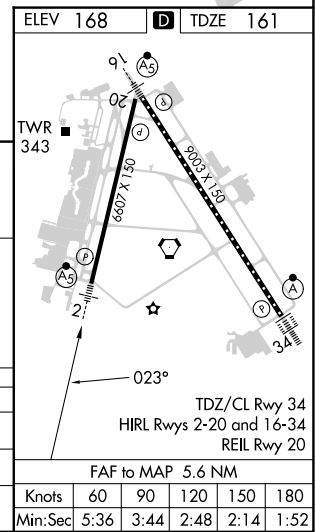
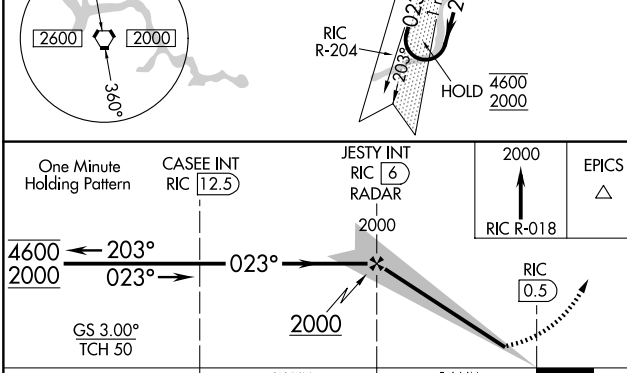
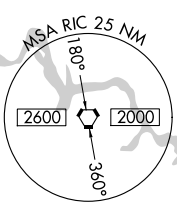
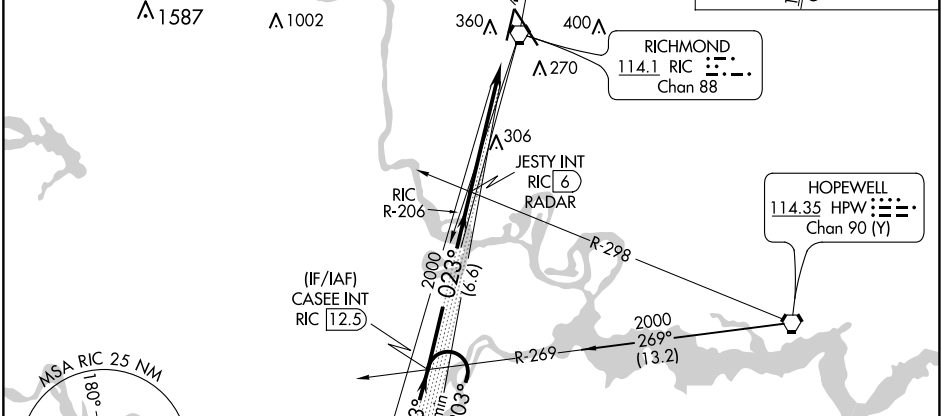
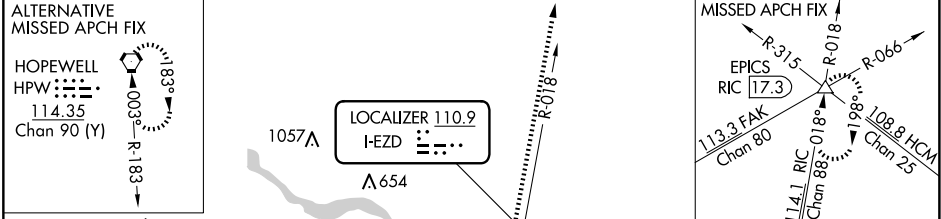
<b>LOC I-EZD</b> <b>110.9</b>	<b>APP CRS</b> <b>023°</b>	<b>Rwy Idg</b> <b>6607</b>
		<b>TDZE</b> <b>161</b>
		<b>Apt Elev</b> <b>168</b>

**▼** Rwy 2 helicopter visibility reduction below ¾ SM NA.  
For inop ALS, increase S-ILS 2 all Cats visibility to ⅝ SM and S-LOC 2 Cats A and B visibility to 1 SM.

**MALSR**

**MISSED APPROACH:** Climb to 2000 on RIC VORTAC R-018 to EPICS INT/RIC 17.3 DME and hold.

<b>ATIS</b> <b>119.15 263.025</b>	<b>POTOMAC APP CON</b> <b>126.4 282.375</b> (001°-185°) <b>126.75 307.2</b> (186°-360°)	<b>RICHMOND TOWER</b> <b>121.1 257.8</b>	<b>GND CON</b> <b>121.9 348.6</b>	<b>CLNC DEL</b> <b>127.55 348.6</b>
--------------------------------------	---	---	--------------------------------------	--



CATEGORY	A	B	C	D
S-ILS 2	457-¾ 296 (300-¾)			
S-LOC 2	560-¾ 399 (400-¾)			
<b>CIRCLING</b>	660-1 492 (500-1)		700-1½ 532 (600-1½)	720-2 552 (600-2)

**ELEV 168 TDZE 161**

Knots	60	90	120	150	180
Min:Sec	5:36	3:44	2:48	2:14	1:52

**RICHMOND INTL (RIC)**  
**ILS or LOC RWY 2**

NE-3, 17 APR 2025 to 15 MAY 2025

NE-3, 17 APR 2025 to 15 MAY 2025

TDZ/CL Rwy 34  
HIRL Rwy 2-20 and 16-34  
REIL Rwy 20

FAF to MAP 5.6 NM