

LOC I-BNE 110.7	APP CRS 337°	Rwy Idg TDZE Apt Elev	9003 161 168
---------------------------	------------------------	-----------------------------	---

ILS or LOC RWY 34

RICHMOND INTL (RIC)

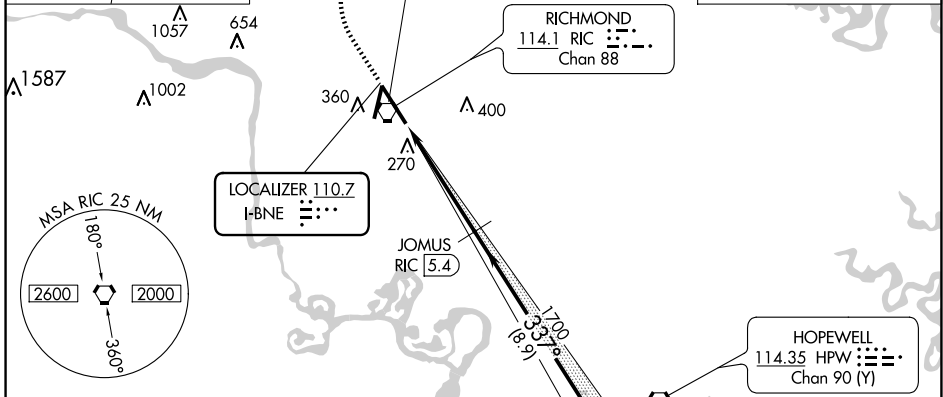
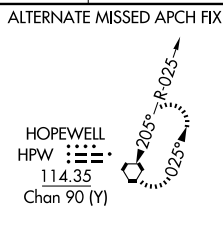
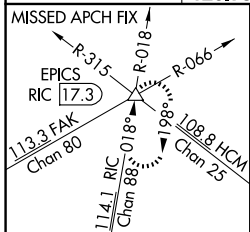
DME required for LOC only.

▼ For inop ALS, increase S-ILS 34 Cat E visibility to RVR 4000 and S-LOC 34 Cat E visibility to 1/2 SM. DME from RIC VORTAC. DME use requires simultaneous reception of I-BNE and RIC DME.



MISSED APPROACH: Climb to 800 then climbing right turn to 2000 on RIC VORTAC R-018 to EPICS INT/RIC 17.3 DME and hold.

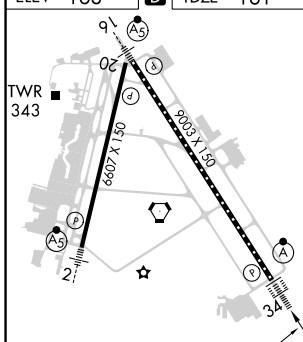
ATIS 119.15 263.025	POTOMAC APP CON 126.4 282.375 (001°-185°) 126.75 307.2 (186°-360°)	RICHMOND TOWER 121.1 257.8	GND CON 121.9 348.6	CLNC DEL 127.55 348.6
-------------------------------	--	--------------------------------------	-------------------------------	---------------------------------



NE-3, 17 APR 2025 to 15 MAY 2025

NE-3, 17 APR 2025 to 15 MAY 2025

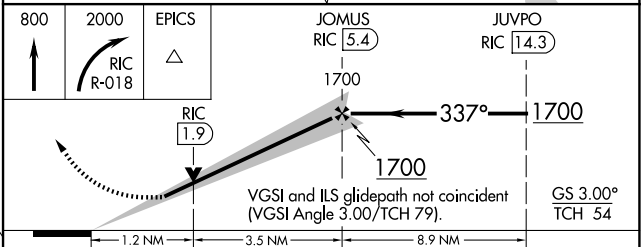
ELEV 168	D	TDZE 161
-----------------	----------	-----------------



TDZ/CL Rwy 34
HIRL Rwys 2-20 and 16-34
REIL Rwy 20

FAF to MAP 4.7 NM

Knots	60	90	120	150	180
Min:Sec	4:42	3:08	2:21	1:53	1:34



CATEGORY	A	B	C	D	E
S-ILS 34	361/18		200 (200-1/2)		
S-LOC 34	620/24	459 (500-1/2)	620/45		459 (500-7/8)
C CIRCLING	660-1	492 (500-1)	700-1 1/2 532 (600-1 1/2)	720-2 552 (600-2)	740-2 572 (600-2)