

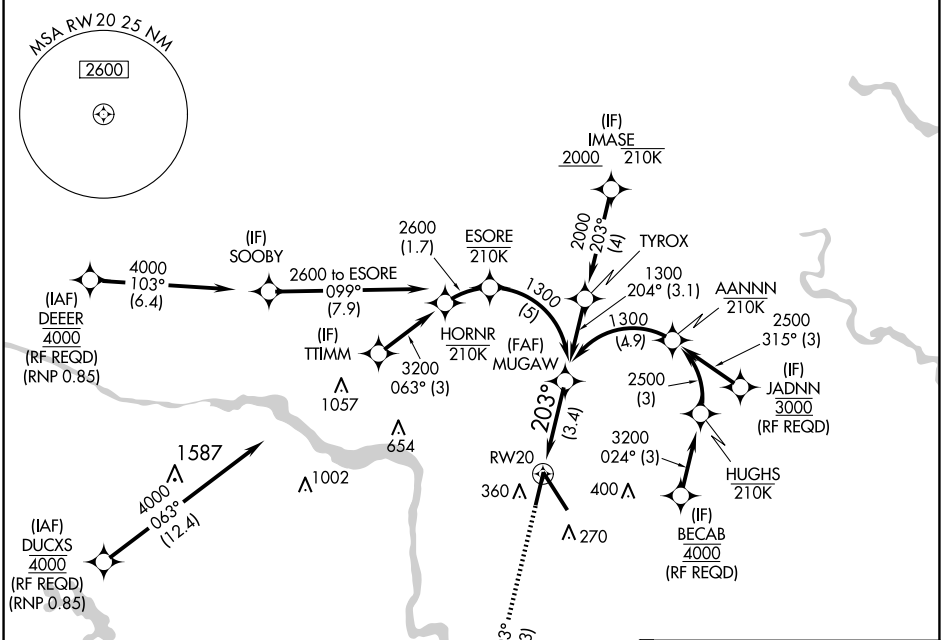
APP CRS 203°	Rwy Idg TDZE Apt Elev	6607 168 168
------------------------	-----------------------------	---

RNAV (RNP) Y RWY 20

RICHMOND INTL (RIC)

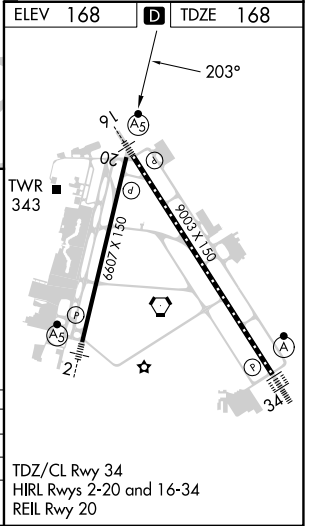
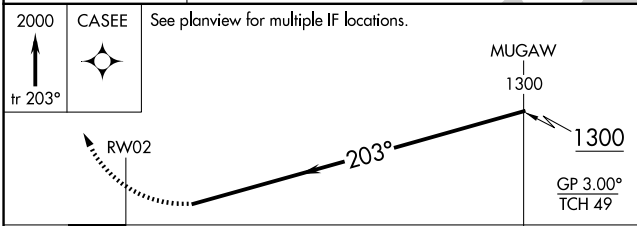
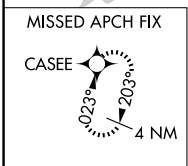
RNP AR APCH.	<p>▼ For uncompensated Baro-VNAV systems, procedure NA below -11°C or above 54°C.</p>	<p>MISSED APPROACH: Climb to 2000 on track 203° CASEE and hold.</p>
--------------	---	---

ATIS 119.15 263.025	POTOMAC APP CON 126.4 282.375 (001°-185°) 126.75 307.2 (186°-360°)	RICHMOND TOWER 121.1 257.8	GND CON 121.9 348.6	CLNC DEL 127.55 348.6
-------------------------------	--	--------------------------------------	-------------------------------	---------------------------------



NE-3, 17 APR 2025 to 15 MAY 2025

NE-3, 17 APR 2025 to 15 MAY 2025



CATEGORY	A	B	C	D
RNP 0.11 DA		505-1	337 (400-1)	
RNP 0.30 DA		613-1½	445 (500-1½)	

AUTHORIZATION REQUIRED