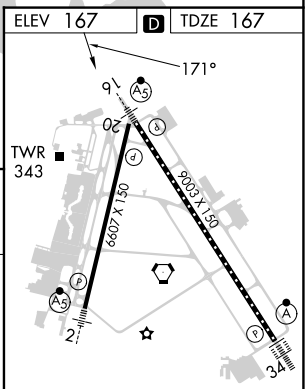
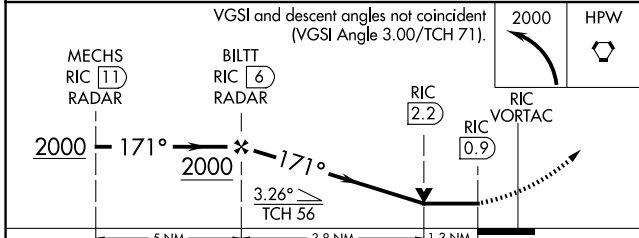
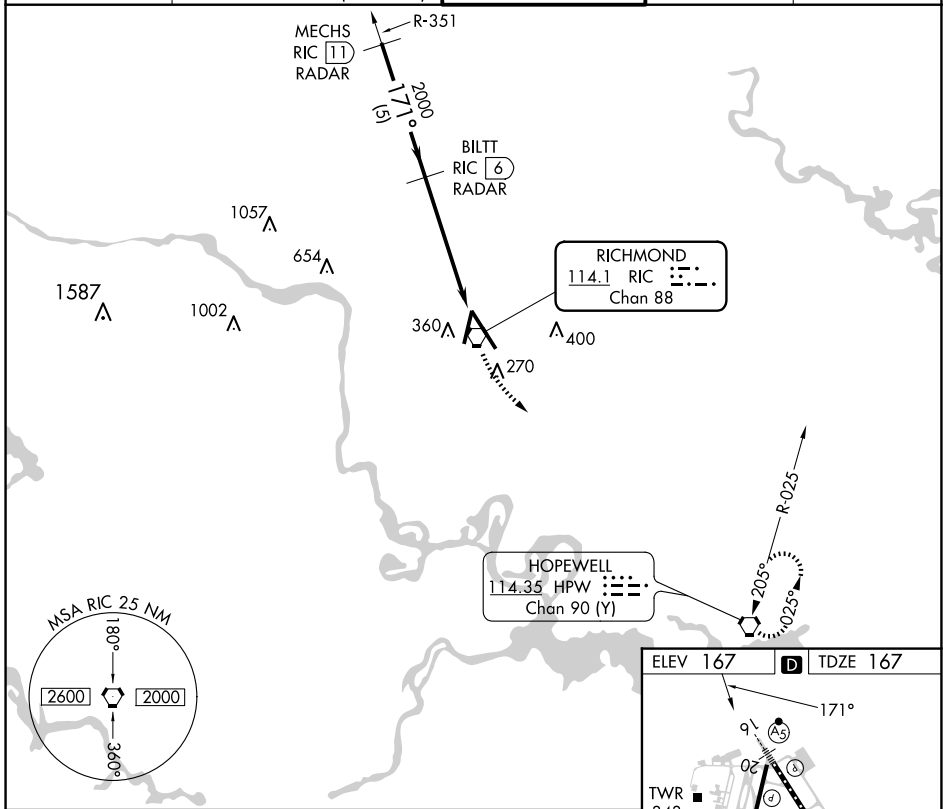


| | | | |
|--|------------------------|---|-------------|
| VORTAC RIC 114.1 Chan 88 | APP CRS 171° | Rwy Idg TDZE 167 Apt Elev 167 | 9003 |
|--|------------------------|---|-------------|

VOR RWY 16

RICHMOND INTL (RIC)

| | | | | |
|--|--|--------------------------------------|---|---------------------------------|
| DME or RADAR required. RADAR required for procedure entry. | | MALSR | MISSED APPROACH: Climbing left turn to 2000 direct HPW VORTAC and hold. | |
| ▼ Rwy 16 helicopter visibility reduction below RVR 4000 NA. For inop ALS, increase S-16 Cat A/B visibility to RVR 5500, and Cat C/D to 1 3/8 SM. | | | | |
| ATIS 119.15 263.025 | POTOMAC APP CON 126.4 282.375 (001°-185°) 126.75 307.2 (186°-360°) | RICHMOND TOWER 121.1 257.8 | GND CON 121.9 348.6 | CLNC DEL 127.55 348.6 |



| | | | | | | | |
|----------|----------------------|---------------|---------------------------|--------------------------|-------------|-------------------|--------------------------|
| ELEV 167 | TDZE 167 | TDZ/CL Rwy 34 | | HIRL Rwys 2-20 and 16-34 | | REIL Rwy 20 | |
| CATEGORY | | A | B | C | D | FAF to MAP 5.1 NM | |
| S-16 | 640/40 473 (500-3/4) | | | 640/50 473 (500-1) | | Knots | 60 90 120 150 180 |
| CIRCLING | 660-1 | 493 (500-1) | 700-1 1/2 533 (600-1 1/2) | 720-2 | 553 (600-2) | Min:Sec | 5:06 3:24 2:33 2:02 1:42 |

NE-3, 17 APR 2025 to 15 MAY 2025

NE-3, 17 APR 2025 to 15 MAY 2025