

VORTAC RIC <b>114.1</b> Chan <b>88</b>	APP CRS <b>188°</b>	Rwy Idg TDZE <b>168</b> Apt Elev <b>168</b>	<b>6607</b>
--	------------------------	---	-------------

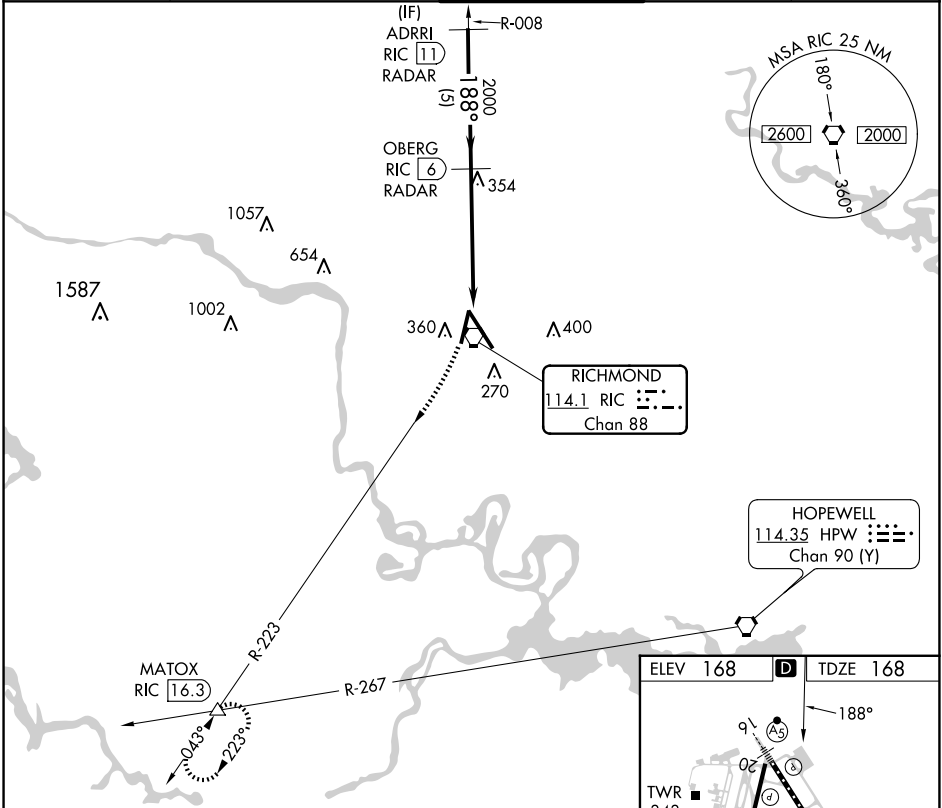
# VOR RWY 20

RICHMOND INTL (RIC)

RADAR required for procedure entry. DME or RADAR required.

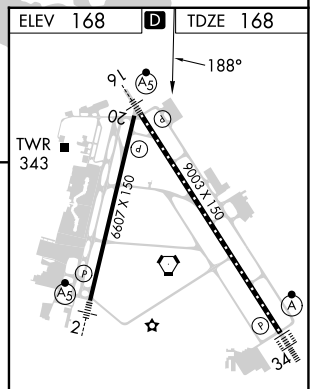
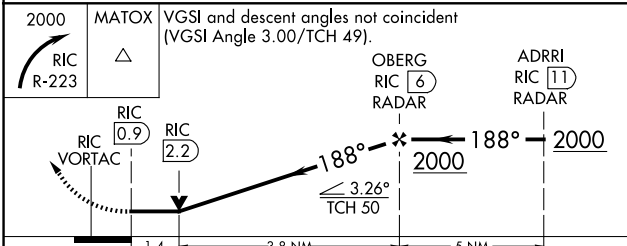
MISSED APPROACH: Climbing right turn to 2000 on RIC R-223 to MATOX INT/RIC 16.3 DME and hold.

Rwy 20 helicopter visibility reduction below 3/4 SM NA.		POTOMAC APP CON <b>126.4 282.375</b> (001°-185°) <b>126.75 307.2</b> (186°-360°)		RICHMOND TOWER <b>121.1 257.8</b>		GND CON <b>121.9 348.6</b>		CLNC DEL <b>127.55 348.6</b>	
---	--	--	--	--------------------------------------	--	-------------------------------	--	---------------------------------	--



NE-3, 17 APR 2025 to 15 MAY 2025

NE-3, 17 APR 2025 to 15 MAY 2025



2000	MATOX	VGSi and descent angles not coincident (VGSi Angle 3.00/TCH 49).			
RIC R-223	△				
		RIC 0.9	RIC 2.2	OBERG RIC 6	ADIRRI RIC 11
		RIC VORTAC		RADAR	RADAR
		1.4	3.8 NM	5 NM	2000
					188°
					188°
					3.26° TCH 50

TDZ/CL Rwy 34					
HIRL Rwys 2-20 and 16-34					
REIL Rwy 20					
FAF to MAP 5.2 NM					
Knots	60	90	120	150	180
Min:Sec	5:12	3:28	2:36	2:05	1:44