

SKYES-FOUR DEPARTURE (SKYES 4.SKYES)

[USAF]

MARCH ARB (KRIV)

RIVERSIDE, CALIFORNIA

ATIS 134.75 239.05
 CLNC DEL
 127.775 268.7
 GND CON
 121.75 335.8
 TOWER
 127.65 253.5
 DEP CON ★
 133.5 306.975
 LOS ANGELES
 CENTER
 132.5 284.7

RADAR required TRM transition

Rwy	Knots	60	120	180	240	300	360
* 32	V/V(fpm)	231	462	693	924	1155	1386
† 14	V/V(fpm)	334	668	1002	1336	1670	2004
† 32	V/V(fpm)	309	618	927	1236	1545	1854

• 11,480

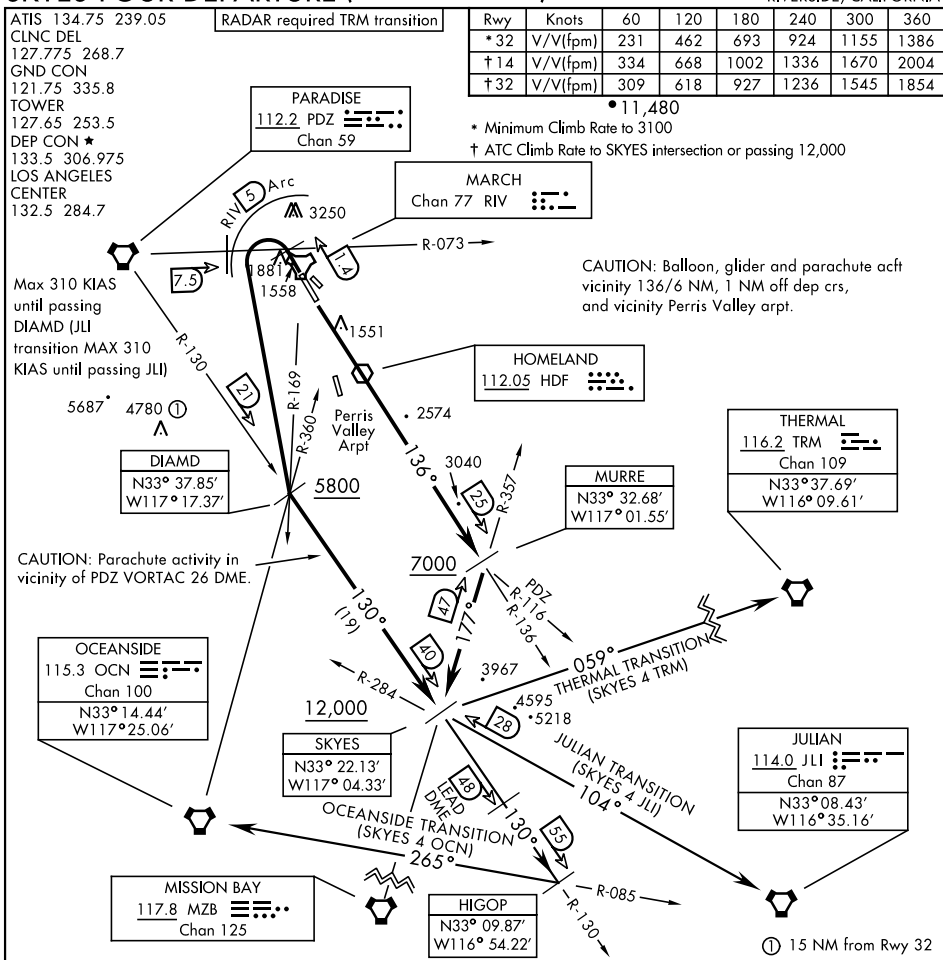
* Minimum Climb Rate to 3100

† ATC Climb Rate to SKYES intersection or passing 12,000

Max 310 KIAS
 until passing
 DIAMD (JLI
 transition MAX 310
 KIAS until passing JLI)

CAUTION: Parachute activity in
 vicinity of PDZ VORTAC 26 DME.

CAUTION: Balloon, glider and parachute acft
 vicinity 136/6 NM, 1 NM off dep crs,
 and vicinity Perris Valley arpt.



SW-3, 17 APR 2025 to 15 MAY 2025

SW-3, 17 APR 2025 to 15 MAY 2025

DEPARTURE ROUTE DESCRIPTION

TAKEOFF RWY 14: Climb via RIV TACAN R-136 or climb direct HDF VOR, then via HDF R-136 to MURRE, intercept MZB VORTAC R-357 to SKYES, cross MURRE at or above 7000, and SKYES at or above 12,000. Thence via transition or assigned route.

TAKEOFF RWY 32: Climb on track 315°, then turn left crossing PDZ VORTAC R-073/RIV TACAN 1.4 DME direct DIAMD, proceed no closer than 7.5 DME PDZ. Remain within 5 DME RIV. Cross DIAMD at or above 5800. Intercept PDZ R-130 to SKYES, cross SKYES at or above 12,000. Thence via transition or assigned route.

JULIAN TRANSITION (SKYES 4 JLI): From over SKYES via JLI VORTAC R-284 direct JLI. MAX 310 KIAS until passing JULIAN VORTAC.

OCEANSIDE TRANSITION (SKYES 4 OCN): From over SKYES via PDZ VORTAC R-130 direct HIGOP, intercept OCN VORTAC R-085 direct OCN.

THERMAL TRANSITION (SKYES 4 TRM): From over SKYES track 059° to TRM. (Radar required)

SKYES-FOUR DEPARTURE (SKYES 4.SKYES)

Orig 28FEB19

RIVERSIDE, CALIFORNIA

MARCH ARB (KRIV)