

LOC I-MCU 110.7	APP CRS 044°	Rwy ldg TDZE Apt Elev	8001 535 559
---------------------------	------------------------	-----------------------------	---

ILS or LOC RWY 4

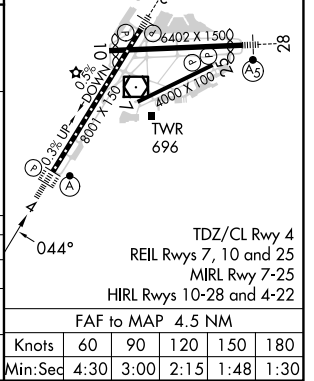
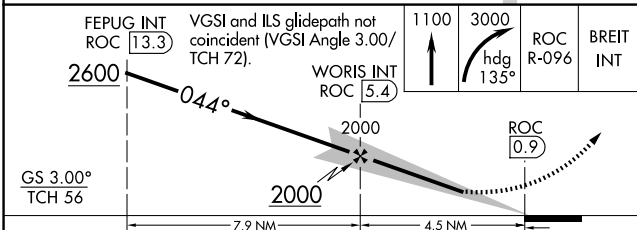
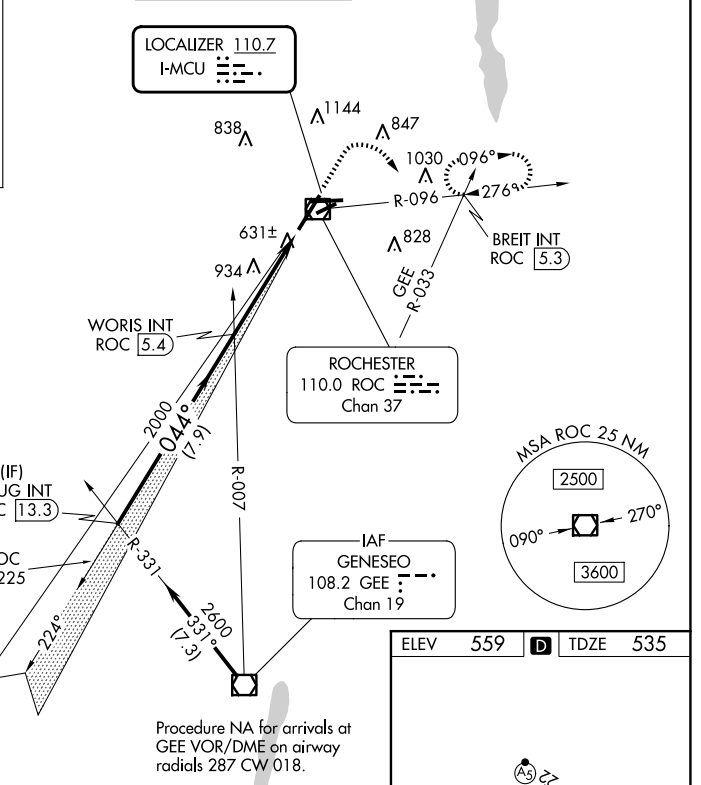
FREDERICK DOUGLASS/GREATER ROCHESTER INTL (ROC)

	ALSF-2	MISSED APPROACH: Climb to 1100 then climbing right turn to 3000 on heading 135° and ROC VOR/DME R-096 to BREIT INT/ROC 5.3 DME and hold, continue climb-in-hold to 3000.

ATIS 124.825	ROCHESTER APP CON 119.55 269.6	ROCHESTER TOWER 118.3 254.3	GND CON 121.7	CLNC DEL 118.8 343.65
------------------------	--	---------------------------------------	-------------------------	---------------------------------

ALTERNATE MISSED APCH FIX

GENESECO
GEE
108.2
Chan 19



CATEGORY	A		B		C		D																																
	735/18		200 (200-1/2)		200 (200-1/2)		200 (200-1/2)																																
S-ILS 4	735/18		200 (200-1/2)		200 (200-1/2)		200 (200-1/2)																																
S-LOC 4	920/24	385 (400-1/2)		920/35		385 (400-5/8)																																	
CIRCLING	1060-1		501 (600-1)		1500-2 3/4		1500-3																																
	1060-1		501 (600-1)		941 (1000-2 3/4)		941 (1000-3)																																
<table border="1"> <tr> <td colspan="10">FAF to MAP 4.5 NM</td> </tr> <tr> <td>Knots</td> <td>60</td> <td>90</td> <td>120</td> <td>150</td> <td>180</td> <td colspan="4"></td> </tr> <tr> <td>Min:Sec</td> <td>4:30</td> <td>3:00</td> <td>2:15</td> <td>1:48</td> <td>1:30</td> <td colspan="4"></td> </tr> </table>										FAF to MAP 4.5 NM										Knots	60	90	120	150	180					Min:Sec	4:30	3:00	2:15	1:48	1:30				
FAF to MAP 4.5 NM																																							
Knots	60	90	120	150	180																																		
Min:Sec	4:30	3:00	2:15	1:48	1:30																																		

NE-2, 17 APR 2025 to 15 MAY 2025

NE-2, 17 APR 2025 to 15 MAY 2025