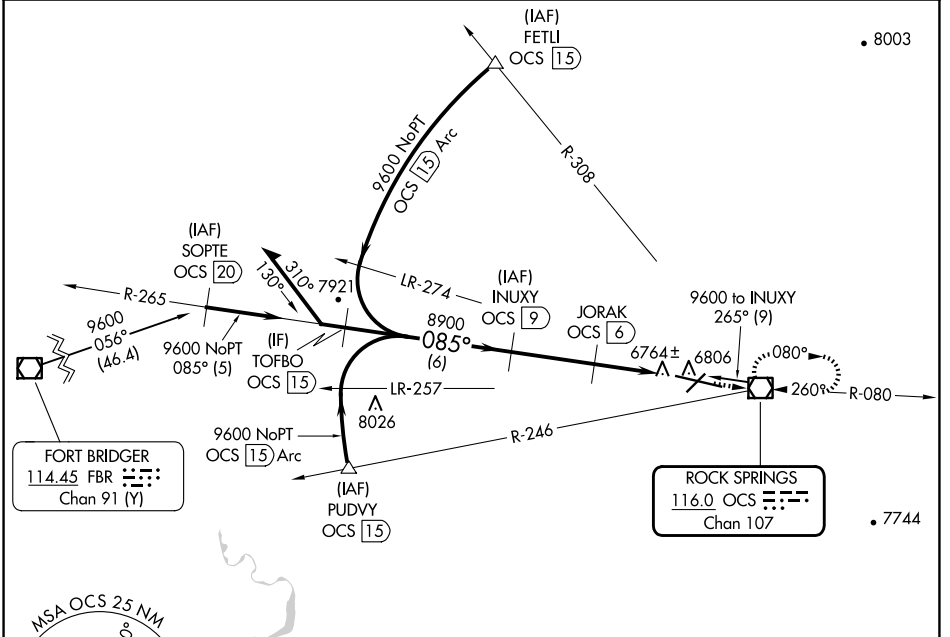


VOR/DME OCS <b>116.0</b> Chan <b>107</b>	APP CRS <b>085°</b>	Rwy Idg <b>10002</b> TDZE <b>6741</b> Apt Elev <b>6765</b>
--	------------------------	--

# VOR RWY 9

SOUTHWEST WYOMING RGNL (R.K.S)

DME required.		ODALS	MISSED APPROACH: Climb to 9300 direct OCS VOR/DME and hold, continue climb-in-hold to 9300.
AWOS-3 <b>118.375</b>	SALT LAKE CENTER <b>124.35 353.5</b>		UNICOM <b>122.8 (CTAF)</b>

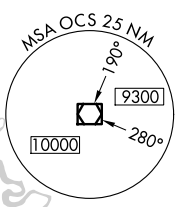


NW-1, 17 APR 2025 to 15 MAY 2025

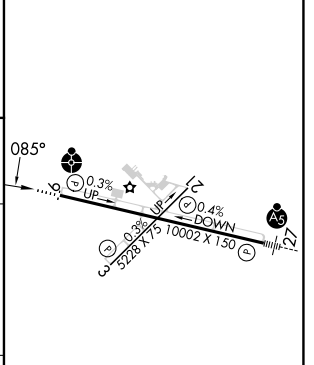
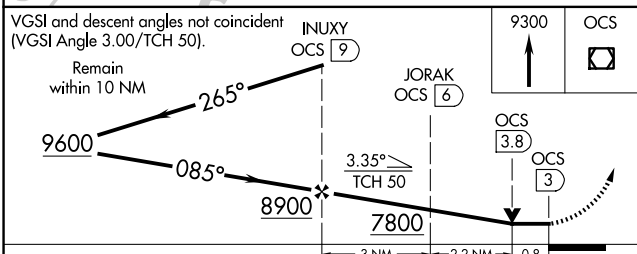
NW-1, 17 APR 2025 to 15 MAY 2025

**FORT BRIDGER**  
114.45 FBR  
Chan 91 (Y)

**ROCK SPRINGS**  
116.0 OCS  
Chan 107



8798 A	ELEV 6765	D	TDZE 6741
--------	-----------	---	-----------



CATEGORY	A	B	C	D
S-9	7020- <sup>3</sup> / <sub>4</sub> 279 (300- <sup>3</sup> / <sub>4</sub> )			7020-1 279 (300-1)
CIRCLING	7140-1 375 (400-1)	7220-1 455 (500-1)	7220-1 <sup>1</sup> / <sub>2</sub> 455 (500-1 <sup>1</sup> / <sub>2</sub> )	7540-2 <sup>1</sup> / <sub>2</sub> 775 (800-2 <sup>1</sup> / <sub>2</sub> )

MIRL Rwy 3-21  
HIRL Rwy 9-27  
REIL Rws 3 and 21