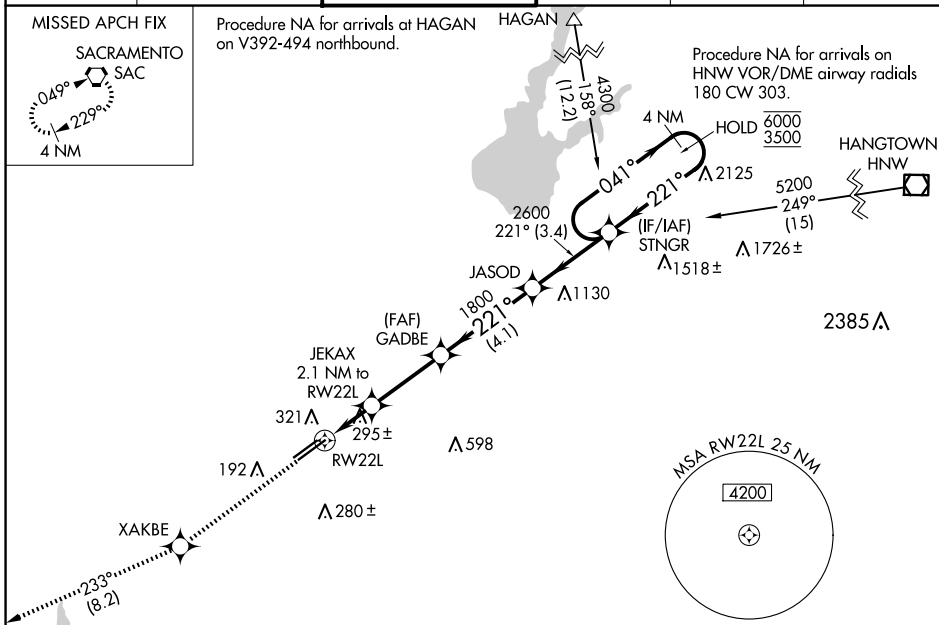


WAAS CH 40225 W22A	APP CRS 221°	Rwy Idg 11301 TDZE 98 Apt Elev 98
--	------------------------	--

RNAV (GPS) RWY 22L

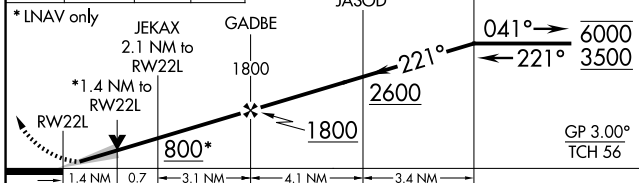
SACRAMENTO MATHER (MHR)

RNP APCH.		MALSRL	MISSED APPROACH: Climb to 3000 direct XAKBE and on track 233° to SAC VORTAC and hold.					
<p>⚠ Circling NA northwest of Rwy 4R-22L. For uncompensated Baro-VNAV systems, LNAV/VNAV NA below -15°C or above 54°C. For inop ALS, increase LNAV/VNAV all Cats visibility to 1½ SM and LNAV Cat C/D visibility to 1¾ SM.</p>			ATIS 118.325	NORCAL APP CON 127.4 317.5	MATHER TOWER * 120.65 (CTAF) 282.25	GND CON 121.85 307.9	CLNC DEL 121.85 307.9	UNICOM 122.95

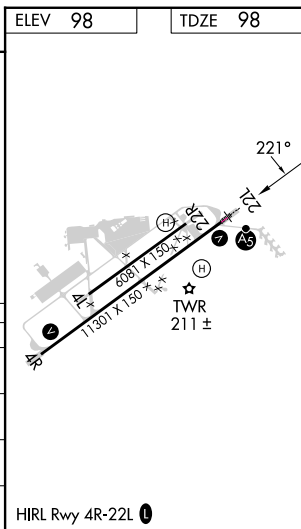


ELEV 98	TDZE 98
----------------	----------------

3000 XAKBE SAC VGS1 and RNAV glidepath not coincident (VGS1 Angle 3.00/TCH 50).
 *LNAV only JEKAX 2.1 NM to RWY 22L
 *1.4 NM to RWY 22L
 800* 1800 2600 1800 6000 3500
 GP 3.00° TCH 56



CATEGORY	A	B	C	D
LPV DA	298-½		200 (200-½)	
LNAV/VNAV DA	517-¾		419 (500-¾)	
LNAV MDA	580-½	482 (500-½)	580-1	482 (500-1)
C CIRCLING	580-1	482 (500-1)	600-1½ 502 (600-1½)	800-2¼ 702 (800-2¼)



HIRL Rwy 4R-22L **⓪**