

(PITTT.PITTT1) 25051

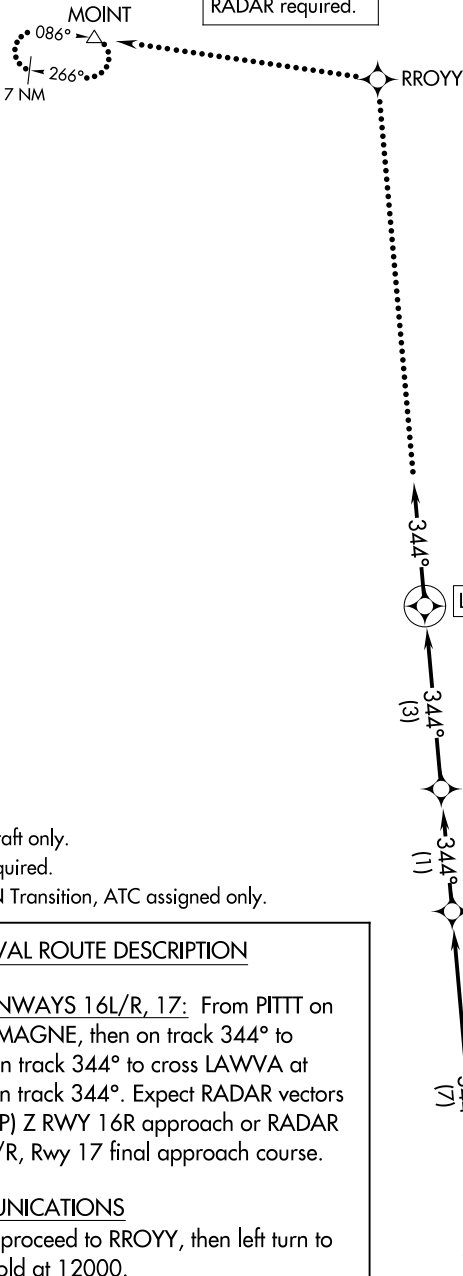
PITTT ONE ARRIVAL (RNAV) Arrival Routes

SALT LAKE CITY INTL (SLC)
SALT LAKE CITY, UTAH

AL-365 (FAA)

RNAV 1 - GPS.
RADAR required.

SALT LAKE CITY APP CON
128.1 307.05
D-ATIS
124.75 125.625



NOTE: Jet aircraft only.
NOTE: GPS required.
NOTE: MYTON Transition, ATC assigned only.

ARRIVAL ROUTE DESCRIPTION

LANDING RUNWAYS 16L/R, 17: From PITTT on track 344° to MAGNE, then on track 344° to QUIPA, then on track 344° to cross LAWVA at 11000, then on track 344°. Expect RADAR vectors for RNAV (RNP) Z RWY 16R approach or RADAR vectors to 16L/R, Rwy 17 final approach course.

LOST COMMUNICATIONS

After LAWVA proceed to RROY, then left turn to MOINT and hold at 12000.

NOTE: Chart not to scale.

PITTT ONE ARRIVAL (RNAV) Arrival Routes

SALT LAKE CITY, UTAH
SALT LAKE CITY INTL (SLC)

(PITTT.PITTT1) 20FEB25

SW-4, 17 APR 2025 to 15 MAY 2025

SW-4, 17 APR 2025 to 15 MAY 2025