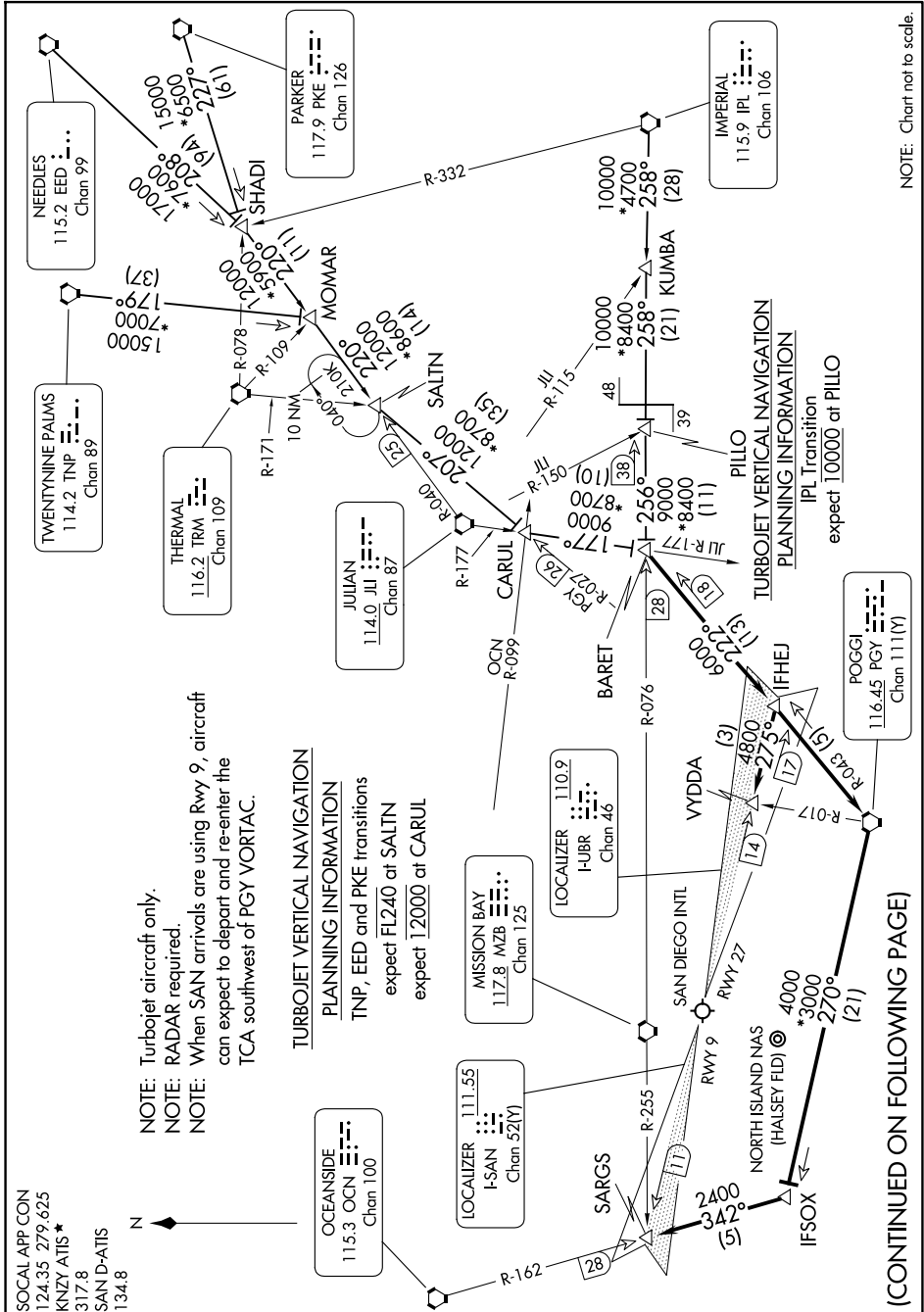


# BARET FIVE ARRIVAL

SW-3, 17 APR 2025 to 15 MAY 2025



NOTE: Chart not to scale.

NOTE: Turboprop aircraft only.  
 NOTE: RADAR required.  
 NOTE: When SAN arrivals are using Rwy 9, aircraft can expect to depart and re-enter the TCA southwest of PGY VORTAC.

TURBOJET VERTICAL NAVIGATION  
PLANNING INFORMATION  
 TNP, EED and PKE transitions  
 expect FL240 at SALTN  
 expect 12000 at CARUL

TURBOJET VERTICAL NAVIGATION  
PLANNING INFORMATION  
 IPL Transition  
 expect 10000 at PILLO

(CONTINUED ON FOLLOWING PAGE)

SW-3, 17 APR 2025 to 15 MAY 2025

# BARET FIVE ARRIVAL