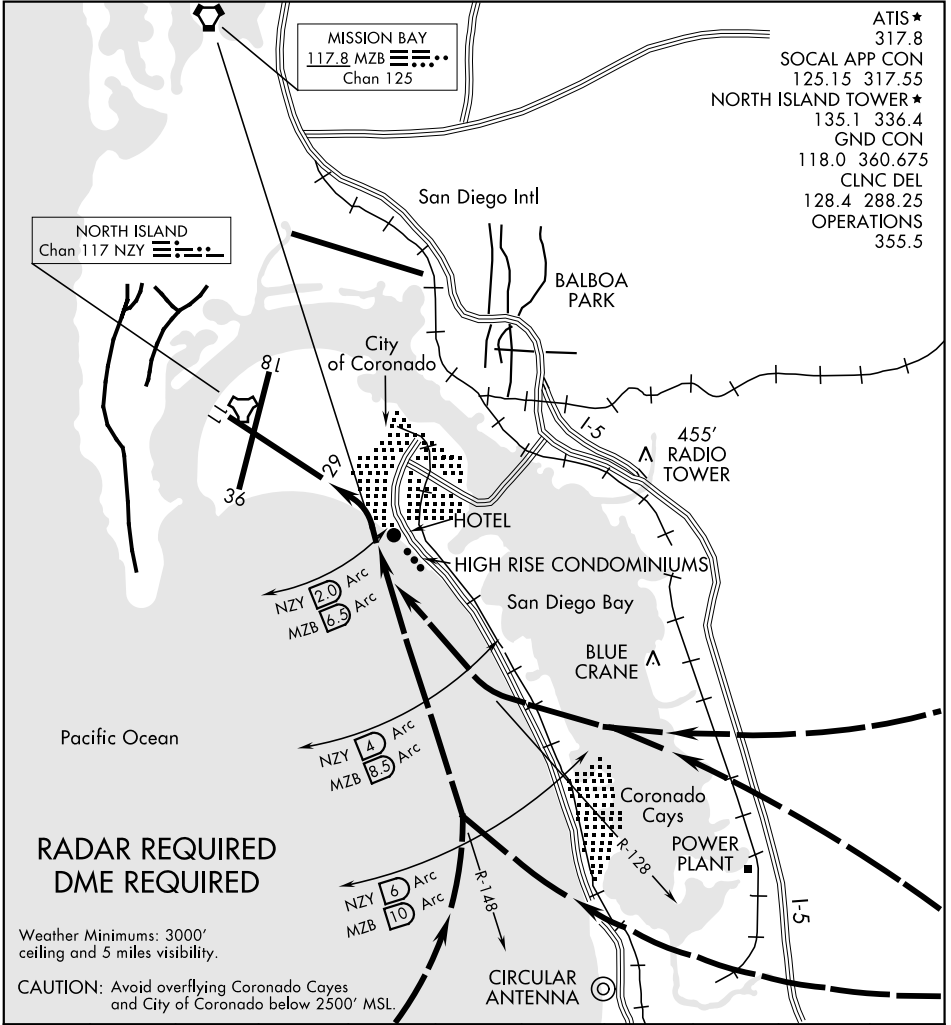


HOTEL VISUAL RWY 29

AL-374 [USN]

NORTH ISLAND NAS (HALSEY FIELD) (KNZY)

SAN DIEGO, CALIFORNIA



- ATIS ★ 317.8
- SOCAL APP CON 125.15 317.55
- NORTH ISLAND TOWER ★ 135.1 336.4
- GND CON 118.0 360.675
- CLNC DEL 128.4 288.25
- OPERATIONS 355.5

RADAR REQUIRED
DME REQUIRED

Weather Minimums: 3000' ceiling and 5 miles visibility.

CAUTION: Avoid overflying Coronado Cayes and City of Coronado below 2500' MSL.

1	2	3	4	5	6	7	8	9	10
---	---	---	---	---	---	---	---	---	----

HOTEL VISUAL RWY 29

Aircraft avoid overflying Coronado Cayes and City of Coronado below 2500' MSL. Proceed visually via the NZY R-128 or MZB R-148 until reaching NZY 2 DME / MZB 6.5 DME, then maneuver to runway centerline for straight-in Runway 29.

SW-3, 17 APR 2025 to 15 MAY 2025

SW-3, 17 APR 2025 to 15 MAY 2025