

LOC/DME I-SAN <b>111.55</b> Chan <b>52(Y)</b>	APCH CRS <b>095°</b>	Rwy Ildg THRE Arprt Elev <b>N/A</b> <b>N/A</b> <b>26</b>	[USN]	NORTH ISLAND NAS (HALSEY FIELD) (KNZY)
-----------------------------------------------------	-------------------------	-------------------------------------------------------------------------	-------	----------------------------------------

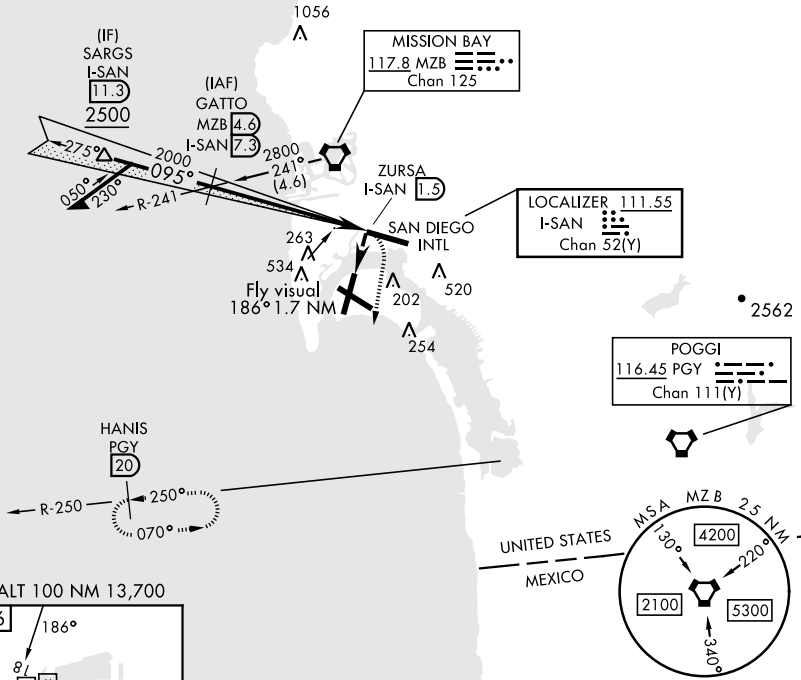
RADAR required at SARGs.

▼ \* CAUTION: Maneuvering for circling approach not authorized W of Rwy 18-36 centerline. Approach authorized for Rwy 18 or left downwind approach to Rwy 29 after flying down Rwy 18.

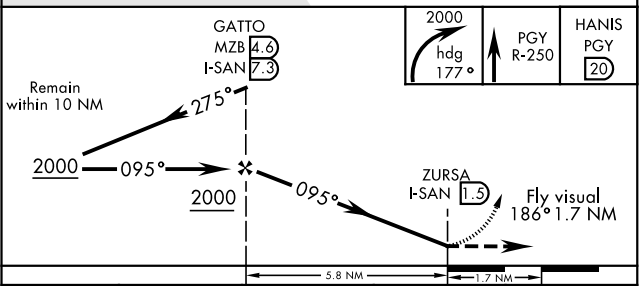
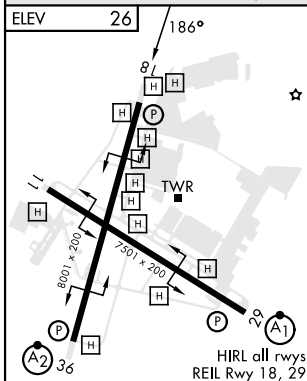
MISSED APPROACH: Climb and maintain 2000 via hdg 177°, intercept PGY VORTAC R-250 to HANIS and hold.

ATIS ★ <b>317.8</b>	SOCAL APP CON <b>125.15 317.55</b>	NORTH ISLAND TOWER ★ <b>135.1 336.4</b>	LINDBERGH TOWER <b>118.3 338.225</b>	GND CON <b>118.0 360.675</b>	CLNC DEL <b>128.4 288.25</b>	PAR/ASR
------------------------	---------------------------------------	--------------------------------------------	-----------------------------------------	---------------------------------	---------------------------------	---------

CAUTION: Aircraft executing missed approach after beginning circling maneuver do not return to missed approach point.



EMERG SAFE ALT 100 NM 13,700



FAF to MAP 5.8 NM					CATEGORY	A	B	C	D
Knots	60	90	120	150	180	860-2	834 (900-2)	880-2½ 854 (900-2½)	880-2¾ 854 (900-2¾)
Min:Sec	5:48	3:52	2:54	2:19	1:56	☑ CIRCLING*			

SW-3, 17 APR 2025 to 15 MAY 2025

SW-3, 17 APR 2025 to 15 MAY 2025