

SAN DIEGO, CALIFORNIA

RNAV (RNP) Z RWY 36

APCH CRS 004°	Rwy Idg TDZE Arprt Elev	8001 19 26
-------------------------	-------------------------------	---------------------------------------

(USN)

NORTH ISLAND NAS (HALSEY FLD) (KNZY)

RNP AR APCH-GPS, RF.

MISSED APPROACH: Climb to 700, then climbing right turn to 2000 direct SKATE and hold.

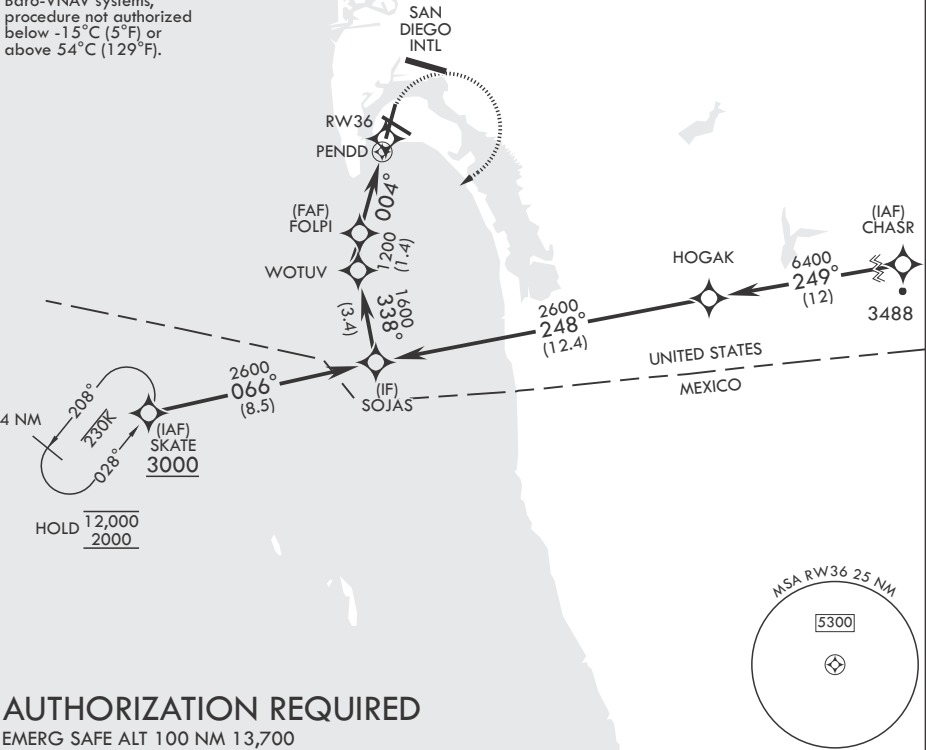
▼ * When ALS inop, increase vis to 7/8 mile.



ATIS★ 317.8	SOCAL APP CON/DEP CON 125.15 317.55	TOWER★ 135.1 336.4	GND CON 118.0 360.675	CLNC DEL 128.4 288.25	ASR/PAR
-----------------------	---	------------------------------	---------------------------------	---------------------------------	---------

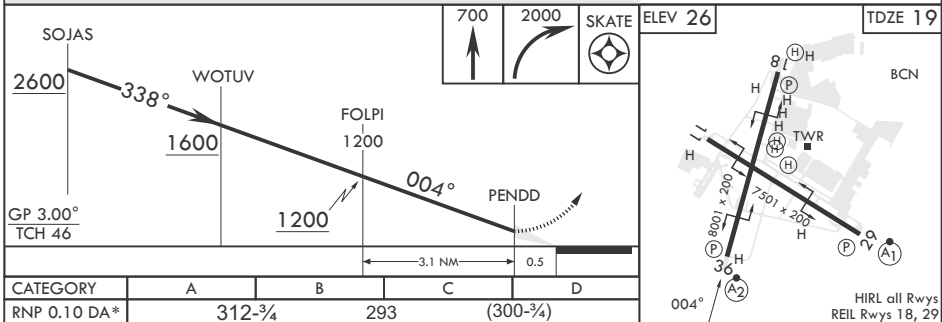
When local altimeter setting not received, use San Diego (SAN) Intl. altimeter setting.

For uncompensated Baro-VNAV systems, procedure not authorized below -15°C (5°F) or above 54°C (129°F).



AUTHORIZATION REQUIRED

EMERG SAFE ALT 100 NM 13,700



SAN DIEGO, CALIFORNIA

32°42'N - 117°13'W

NORTH ISLAND NAS (HALSEY FLD) (KNZY)

Orig 28NOV24

RNAV (RNP) Z RWY 36

SW-3, 17 APR 2025 to 15 MAY 2025

SW-3, 17 APR 2025 to 15 MAY 2025